

for all common pressfitting systems

**Select REMS pressing tongs/
REMS pressing rings yourself!**

Find the desired press fitting system in the table below and choose the size of pressing tongs/pressing rings that you require. Please note that pressfitting systems for gas installation may only be pressed with the pressing tongs/pressing rings which are highlighted in yellow in the table. Intermediate tongs (page 170) are necessary for driving the REMS pressing rings (PR).

Highly durable pressing tongs/pressing rings made of tenacious, specially hardened special steel. Pressing contours of REMS pressing tongs/pressing rings are system-specific and correspond with the respective pressfitting system. Thus perfect system-conformity, safe press jointing. Pressing jaws of pressing tongs/pressing rings manufactured on CNC production centres ensure high-precision machining of pressing contour. Low production tolerances as a result.

Drive through all REMS radial presses (except for REMS Mini-Press ACC, REMS Mini-Press 22V ACC) and suitable radial presses of other makes. All pressing tongs marked with * have an optional connection (Patent EP 1 223 008, Patent US 6,739,172) for manual drive through the radial press REMS Eco-Press. Read and follow the installation and assembly instructions of the system provider/manufacturer.

REMS pressing tongs

REMS pressing tongs with 2 swivellable monoblock pressing jaws. Most sold standard version. REMS ACz, Fz, RFz, RFlz pressing tongs with teeth prevent formation of burr on the pressing sleeve (Patent EP 2 027 971).

REMS pressing tongs (4G)

REMS pressing tongs (4G) with two pivoted, parallel aligned pressing segments for linear pressing of midsize dimensions.

REMS pressing tongs (S)

REMS pressing tongs (S) with one fixed and two pivoted pressing segments, for midsize dimensions.

REMS pressing rings (PR-3S)

REMS pressing ring (PR-3S) with 3 swivellable pressing segments mounted on a jointed ring for large dimension complex pressings. Ideal pressing through radially controlled movement of pressing segments, with adaptor tongs.

REMS pressing rings (PR-3B)

REMS pressing rings (PR-3B) with 3 pressing segments for high quality, large dimension pressings Optimum pressing by radially controlled movement of the pressing segments with adaptor tongs.

REMS pressing rings 45° (PR-2B)

REMS pressing ring 45° (PR-2B), with 2 pressing jaws, for secure engagement of the pressing jaws in places of difficult access by 45° inclination (Patent EP 2 774 725). Drive with adaptor tongs.

Traceability according to EN 1775:2007

REMS pressing tongs/pressing rings with pressing contour F, M, V, SA, B, RN and UP have worked a specific marking into the pressing contour which leaves a lasting impression on the pressed fitting after the pressing process. This enables the user to check again whether the most suitable pressing tongs or the suitable pressing ring have been used to make the pressfit connection even after the pressing process.

With this traceability REMS fulfils the recommendations of the European standard EN 1775:2007 for the installation of pressfitting systems for gas.



Patent EP 1 223 008
Patent US 6,739,172



German Quality Product



with 2 swivellable monoblock pressing jaws. Most sold



REMS pressing tongs (4G)



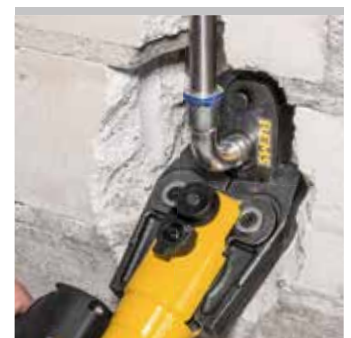
REMS pressing tongs (S)



REMS pressing rings (PR-3S)



REMS pressing rings (PR-3B)



REMS pressing rings 45° (PR-2B)
Patent EP 2 774 725

Hold-Harmless and Indemnification Agreement

See page 172.

Confirmation of suitability

See page 171.



REMS pressing tongs REMS pressing rings

Accessories for REMS radial presses (except for REMS Mini-Press ACC, REMS Mini-Press 22V ACC) and suitable radial presses of other makes



Pressing tongs with teeth
Patent EP 2 027 971



Example REMS pressing tongs M:
"M" imprint on pressed fitting for
traceability according to EN 1775:2007

REMS pressing tongs

REMS pressing rings

Accessories for REMS radial presses (except for REMS Mini-Press ACC, REMS Mini-Press 22 V ACC) and suitable radial presses of other makes

System	Pressing contour	Art.-No.	System	Pressing contour	Art.-No.	System	Pressing contour	Art.-No.
AC-FIX PRESS (Global Piping Systems)	H 12*	570300	ALB Sistema Multicapa	TH 16*	570460	BARBI MULTIPEX (Industrial Blansol)	H 14*	570310
	H 16*	570320		TH 18*	570465		H 16*	570320
	H 20*	570350		TH 20*	570470		H 18*	570340
	H 25*	570360		TH 26*	570475		H 20*	570350
	H 32	570380		TH 32	570480		H 25*	570360
	RFz 12*	571320		TH 40	570485		H 26*	570370
	RFz 16*	571325		TH 50 (S)	572400		H 32	570380
	RFz 20*	571330		TH 63 (S)	572405		H 40 (4G)	570390
	RFz 25	571335		H 16*	570320		U 16*	570765
	RFz 32	571340		H 18*	570340		U 18*	570770
	U 16*	570765		H 20*	570350		U 20*	570775
	U 20*	570775		H 26*	570370		C 26*	570750
	U 25*	570780		H 32	570380		U 32	570785
	U 32	570785		H 40 (4G)	570390		U 40	570790
	VX 16*	571635		U 16*	570765			
	VX 20*	571640		U 18*	570770			
				U 20*	570775			
				U 25*	570780			
				U 32	570785			
	ACOME ACOPEX ALU	H 16*		570320	APE Serie AP		B 16*	570850
H 20*		570350	B 20*	570860		B 16*	570850	
H 26*		570370	B 26	570870		B 18*	570855	
H 32		570380	B 32	570880		B 20*	570860	
TH 16*		570460	H 16*	570320		B 26	570870	
TH 20*		570470	H 20*	570350		B 32	570880	
TH 26*		570475	H 26*	570370		Fz 40	570742	
TH 32		570480	H 32	570380		Fz 50	570747	
U 16*		570765	TH 16*	570460		F 63 (S)	572385	
U 20*		570775	TH 18*	570465		F 75 (PR-3B) ³⁾	572830	
U 32		570785	TH 20*	570470				
			TH 26*	570475				
			TH 32	570480				
			U 16*	570765				
			U 20*	570775				
		U 32	570785					
ACOME MT	ACz 12*	572642	APE Serie AP Gas	TH 16*	570460	BRASELI GPF GAS	TH 16*	570460
	ACz 16*	572644		TH 20*	570470		TH 20*	570470
	ACz 20*	572646		TH 26*	570475		TH 25*	570495
	ACz 25	572648		TH 32	570480		TH 32	570480
AHLSELL A-press elförzinkad	M 12	570100	AQUATECHNIK Universal	B 16*	570850	BRASELI Pressfitting PE-X	RFz 16*	571325
	M 15	570110		B 20*	570860		RFz 20*	571330
	M 18	570120		B 26	570870		RFz 25	571335
	M 22	570130		B 32	570880		RFz 32	571340
	M 28	570140		F 16*	570717			
	M 35	570150		F 20*	570727			
	M 42 (PR-3S) ³⁾	572706		F 26*	570730			
	M 54 (PR-3S) ³⁾	572708		F 32	570735			
	M 12 45° (PR-2B) ³⁾	574520		H 16*	570320			
	M 15 45° (PR-2B) ³⁾	574522		H 20*	570350			
	M 18 45° (PR-2B) ³⁾	574524		H 26*	570370			
	M 22 45° (PR-2B) ³⁾	574526		H 32	570380			
	M 28 45° (PR-2B) ³⁾	574528		TH 16*	570460			
	M 35 45° (PR-2B) ³⁾	574530		TH 20*	570470			
				TH 26*	570475			
		TH 32	570480					
		U 16*	570765					
		U 20*	570775					
		U 32	570785					
AHLSELL A-press koppar	V 12	570107	ASCHL NIR	M 15	570110	Brass Form Master Press	H 16*	570320
	V 15	570115		M 18	570120		H 18*	570340
	V 18	570125		M 22	570130		H 20*	570350
	V 22	570135		M 28	570140		TH 16*	570460
	V 28	570145		M 35	570150		TH 18*	570465
	V 35	570155		M 42 (PR-3S) ³⁾	572706		TH 20*	570470
	V 42	570165		M 54 (PR-3S) ³⁾	572708		U 16*	570765
	V 54	570175		M 15 45° (PR-2B) ³⁾	574522		U 18*	570770
	V 12 45° (PR-2B) ³⁾	574502		M 18 45° (PR-2B) ³⁾	574524		U 20*	570785
	V 15 45° (PR-2B) ³⁾	574504		M 22 45° (PR-2B) ³⁾	574526			
	V 18 45° (PR-2B) ³⁾	574506		M 28 45° (PR-2B) ³⁾	574528			
	V 22 45° (PR-2B) ³⁾	574508		M 35 45° (PR-2B) ³⁾	574530			
	V 28 45° (PR-2B) ³⁾	574510						
	V 35 45° (PR-2B) ³⁾	574512						
AHLSELL A-press rostfritt	M 15	570110	ASTM F 1807 (Fittings with Copper Crimp Ring for PEX tubing)	US 3/8"	571450	BRASSTECH MULTItermoSAN Brasspress	B 16*	570850
	M 18	570120		US 1/2"	571455		B 20*	570860
	M 22	570130		US 3/4"	571460		B 26	570870
	M 28	570140		US 1"	571465		B 32	570880
	M 35	570150		US 1 1/4"	571470		F 16*	570717
	M 42 (PR-3S) ³⁾	572706		US 1 1/2"	571475		F 20*	570727
	M 54 (PR-3S) ³⁾	572708		US 2"	571477		F 26*	570730
	M 15 45° (PR-2B) ³⁾	574522					H 16*	570320
	M 18 45° (PR-2B) ³⁾	574524					H 18*	570340
	M 22 45° (PR-2B) ³⁾	574526					H 20*	570350
	M 28 45° (PR-2B) ³⁾	574528					H 26*	570370
	M 35 45° (PR-2B) ³⁾	574530					TH 16*	570460
							TH 18*	570465
							TH 20*	570470
							TH 26*	570475
				TH 32	570480			
				TH 40	570485			
				TH 50 (S)	572400			
				TH 63 (S)	572405			
				U 16*	570765			
				U 18*	570770			
				U 20*	570775			
				U 32	570785			
AIRBEL PRESSCLIM	M 15	570110	Bampi BALPEX (serie MP)	TH 16*	570460	Business Key MT-PRESS (inox)	M 15	570110
	M 18	570120		TH 18*	570465		M 18	570120
	M 22	570130		TH 20*	570470		M 22	570130
	M 28	570140		TH 26*	570475		M 28	570140
	M 35	570150		TH 32	570480		M 35	570150
	M 42 (PR-3S) ³⁾	572706		TH 40	570485		M 42 (4G)	570160
	M 54 (PR-3S) ³⁾	572708		TH 50 (S)	572400		M 54 (4G)	570170
	M 15 45° (PR-2B) ³⁾	574522		TH 63 (S)	572405		M 42 (PR-3S) ³⁾	572706
	M 18 45° (PR-2B) ³⁾	574524					M 54 (PR-3S) ³⁾	572708
	M 22 45° (PR-2B) ³⁾	574526					M 15 45° (PR-2B) ³⁾	574522
	M 28 45° (PR-2B) ³⁾	574528					M 18 45° (PR-2B) ³⁾	574524
	M 35 45° (PR-2B) ³⁾	574530					M 22 45° (PR-2B) ³⁾	574526
							M 28 45° (PR-2B) ³⁾	574528
							M 35 45° (PR-2B) ³⁾	574530
AIRBEL SERTINOX	M 15	570110	BARBI EASYPRESS (Industrial Blansol)	H 12*	570300	Business Key MT-PRESS (inox)	M 15	570110
	M 18	570120		H 16*	570320		M 18	570120
	M 22	570130		H 20*	570350		M 22	570130
	M 28	570140		H 25*	570360		M 28	570140
	M 35	570150		H 32	570380		M 35	570150
	M 42 (PR-3S) ³⁾	572706		RFz 12*	571320		M 42 (4G)	570160
	M 54 (PR-3S) ³⁾	572708		RFz 16*	571325		M 54 (4G)	570170
	M 15 45° (PR-2B) ³⁾	574522		RFz 20*	571330		M 42 (PR-3S) ³⁾	572706
	M 18 45° (PR-2B) ³⁾	574524		RFz 25	571335		M 54 (PR-3S) ³⁾	572708
	M 22 45° (PR-2B) ³⁾	574526		RFz 32	571340		M 15 45° (PR-2B) ³⁾	574522
	M 28 45° (PR-2B) ³⁾	574528		U 16*	570765		M 18 45° (PR-2B) ³⁾	574524
	M 35 45° (PR-2B) ³⁾	574530		U 20*	570775		M 22 45° (PR-2B) ³⁾	574526
				U 25*	570780		M 28 45° (PR-2B) ³⁾	574528
				U 32	570785		M 35 45° (PR-2B) ³⁾	574530

REMS pressing tongs REMS pressing rings

Accessories for REMS radial presses (except for REMS Mini-Press ACC, REMS Mini-Press 22 V ACC) and suitable radial presses of other makes

System	Pressing contour	Art.-No.	
Cello Products >B<- Press	VUS ½" (OD 15,9mm)	571770	
	VUS ¾" (OD 22,2mm)	571775	
	VUS 1" (OD 28,6mm)	571780	
	VUS 1¼" (OD 34,9mm)	571785	
	VUS 1½" (OD 41,3mm)	571790	
	VUS 2" (OD 54,0mm)	571795	
CHIALI CHIALIPEX	TH 16*	570460	
	TH 20*	570470	
	TH 26*	570475	
	TH 32	570480	
	TH 40	570485	
	TH 50 (S)	572400	
	TH 63 (S)	572405	
Climatek Clima Therm	TH 14*	570455	
	TH 16*	570460	
	TH 18*	570465	
	TH 20*	570470	
	TH 26*	570475	
	TH 32	570480	
	H 40 A (4G)	570695	
Climatrix Climatrix Rhinopex	H 16*	570320	
	H 20*	570350	
	U 16*	570765	
	U 20*	570775	
	TH 14*	570455	
	TH 16*	570460	
	TH 18*	570465	
	TH 20*	570470	
	TH 26*	570475	
	TH 32	570480	
ClouSet	TH 16*	570460	
	TH 18*	570465	
	TH 20*	570470	
COMAP SudoPress Carbon V	V 12	570107	
	V 15	570115	
	V 18	570125	
	V 22	570135	
	V 28	570145	
	V 35	570155	
	V 42	570165	
	V 54	570175	
COMAP SudoPress Copper V	V 12	570107	
	V 14	570112	
	V 15	570115	
	V 16	570117	
	V 18	570125	
	V 22	570135	
	V 28	570145	
	V 35	570155	
	V 42	570165	
	V 54	570175	
COMAP SudoPress Copper Gas	V 12	570107	
	V 14	570112	
	V 15	570115	
	V 16	570117	
	V 18	570125	
	V 22	570135	
	V 28	570145	
	V 35	570155	
	V 42	570165	
	V 54	570175	
COMAP SudoPress Copper Solar	V 14	570112	
	V 15	570115	
	V 16	570117	
	V 18	570125	
	V 22	570135	
COMAP SudoPress Stainless	V 15	570115	
	V 18	570125	
	V 22	570135	
	V 28	570145	
	V 35	570155	
	V 42	570165	
V 54	570175		
Comap PexPress	RFz 12*	571320	
	RFz 16*	571325	
	RFz 20*	571330	
	RFz 25	571335	
Comap SkinPress	TH 14*	570455	
	TH 16*	570460	
	TH 18*	570465	
	TH 20*	570470	
	TH 26*	570475	
	THL 32	570487	
	TH 40	570485	
	TH 50 (S)	572400	
	TH 63 (S)	572405	

System	Pressing contour	Art.-No.	
Comap SkinPress Gas	TH 16*	570460	
	TH 20*	570470	
	TH 26*	570475	
	THL 32	570487	
Comap SkinPress PPSU	TH 16*	570460	
	TH 20*	570470	
	TH 26*	570475	
	THL 32	570487	
COMAP Xpress Carbon	M 12	570100	
	M 15	570110	
	M 18 ¹⁾	570120	
	M 22	570130	
	M 28 ¹⁾	570140	
	M 35	570150	
	M 42 (4G)	570160	
	M 54 (4G)	570170	
	M 42 (PR-3S) ³⁾	572706	
	M 54 (PR-3S) ³⁾	572708	
	M 12 45° (PR-2B) ³⁾	574520	
	M 15 45° (PR-2B) ³⁾	574522	
	M 18 45° (PR-2B) ³⁾	574524	
	M 22 45° (PR-2B) ³⁾	574526	
	M 28 45° (PR-2B) ³⁾	574528	
	M 35 45° (PR-2B) ³⁾	574530	
COMAP Xpress Copper	M 12	570100	
	M 15	570110	
	M 18 ¹⁾	570120	
	M 22	570130	
	M 28 ¹⁾	570140	
	M 35	570150	
	M 42 (PR-3S) ³⁾	572706	
	M 54 (PR-3S) ³⁾	572708	
	M 12 45° (PR-2B) ³⁾	574520	
	M 15 45° (PR-2B) ³⁾	574522	
	M 18 45° (PR-2B) ³⁾	574524	
M 22 45° (PR-2B) ³⁾	574526		
M 28 45° (PR-2B) ³⁾	574528		
M 35 45° (PR-2B) ³⁾	574530		
COMAP Xpress Copper Gas	M 15	570110	
	M 18 ¹⁾	570120	
	M 22	570130	
	M 28 ¹⁾	570140	
	M 35	570150	
	M 42 (PR-3S) ³⁾	572706	
	M 54 (PR-3S) ³⁾	572708	
COMAP Xpress Stainless	M 15	570110	
	M 18 ¹⁾	570120	
	M 22	570130	
	M 28 ¹⁾	570140	
	M 35	570150	
	M 42 (4G)	570160	
	M 54 (4G)	570170	
	M 42 (PR-3S) ³⁾	572706	
	M 54 (PR-3S) ³⁾	572708	
	M 15 45° (PR-2B) ³⁾	574522	
	M 18 45° (PR-2B) ³⁾	574524	
M 22 45° (PR-2B) ³⁾	574526		
M 28 45° (PR-2B) ³⁾	574528		
M 35 45° (PR-2B) ³⁾	574530		
COMISA Press System	TH 14*	570455	
	TH 16*	570460	
	TH 18*	570465	
	TH 20*	570470	
	TH 25*	570495	
	TH 26*	570475	
	TH 32	570480	
	TH 40	570485	
	TH 50 (S)	572400	
	TH 63 (S)	572405	
	H 14*	570310	
	H 16*	570320	
	H 18*	570340	
	H 20*	570350	
	H 26*	570370	
H 32	570380		
B 14*	570845		
B 16*	570850		
B 18*	570855		
B 20*	570860		
B 26	570870		
B 32	570880		
COMISA Press System Gas	TH 16*	570460	
	TH 20*	570470	
	TH 26*	570475	
	TH 32	570480	

System	Pressing contour	Art.-No.
CONEL CONNECT MULTI	F 16*	570717
	F 20*	570727
	F 26*	570730
	F 32	570735
	H 16*	570320
	H 20*	570350
	H 26*	570370
	H 32	570380
	TH 16*	570460
	TH 20*	570470
	TH 26*	570475
	TH 32	570480
	U 16*	570765
	U 20*	570775
	(DN 26) U 25*	570780
	U 32	570785
	VP 16*	570910
VP 20*	570915	
VP 32	570925	
DIWAsystems	TH 14*	570455
	TH 16*	570460
	TH 20*	570470
	TH 26*	570475
	TH 32	570480
	TH 40	570485
TH 50 (S)	572400	
TH 63 (S)	572405	
DUOFIL MKSYSYSTEM	U 16*	570765
	U 18*	570770
	U 20*	570775
	U 25*	570780
	U 32	570785
DW Verbundrohr multitubo systems	U 16*	570765
	U 18*	570770
	U 20*	570775
	U 25*	570780
	U 32	570785
	U 40	570790
	U 50	570795
U 63 (PR-3B) ³⁾	572837	
U 63 (S)	572365	
U 75 (PR-3B) ³⁾	572828	
EBRILLE Isomonflex	U 16*	570765
	U 18*	570770
	U 20*	570775
	U 25*	570780
	H 26*	570370
	TH 26*	570475
	U 32	570785
EBRILLE Monflex	U 14*	570760
	U 16*	570765
	U 18*	570770
	U 20*	570775
	U 25*	570780
	H 26*	570370
TH 26*	570475	
U 32	570785	
U 40	570790	
U 50	570795	
U 63 (PR-3B) ³⁾	572837	
U 63 (S)	572365	
U 75 (PR-3B) ³⁾	572828	
EFFEBI PRESSTIGE	M 15	570110
	M 18	570120
	M 22	570130
	M 28	570140
	M 35	570150
	M 15 45° (PR-2B) ³⁾	574522
	M 18 45° (PR-2B) ³⁾	574524
	M 22 45° (PR-2B) ³⁾	574526
	M 28 45° (PR-2B) ³⁾	574528
	M 35 45° (PR-2B) ³⁾	574530
	V 15	570115
	V 18	570125
	V 22	570135
	V 28	570145
	V 35	570155
	V 42	570165
V 54	570175	
V 15 45° (PR-2B) ³⁾	574504	
V 18 45° (PR-2B) ³⁾	574506	
V 22 45° (PR-2B) ³⁾	574508	
V 28 45° (PR-2B) ³⁾	574510	
V 35 45° (PR-2B) ³⁾	574512	

Pressfitting systems for gas installations must only be pressed with pressing tongs/pressing rings which are highlighted in yellow.

Observe the national regulations.

* These pressing tongs also fit the manual radial press REMS Eco-Press. Observe the national regulations.

¹⁾ Only pressing tongs from designation "108" (1st quarter of 2008), "208" (2nd quarter of 2008) etc. can be used. The designation is stamped on every pressing jaw.

²⁾ For this pressfitting system producing a pressing joint with manual radial presses is not permitted.

³⁾ Adapter tongs are required for driving pressing rings (PR), see page 170.

⁴⁾ Press fittings made of red bronze (ProPress XL) must be pressed with pressing rings with press contour VUSR, copper fittings (ProPress XL-C) and stainless steel fittings (ProPress XL-S) with pressing rings with press contour VUSF.

⁵⁾ For taking suitable pressing inserts.

⁶⁾ Press fittings made of red bronze (Sanpress XL) must be pressed with pressing rings with press contour VR, copper fittings (Profipress XL, Profipress G XL), carbon steel (Prestabo XL) and stainless steel fittings (Sanpress Inox XL, Sanpress Inox G XL) with pressing rings with press contour VF.

⁷⁾ Driven by REMS Power-Press XL.

The suitability of REMS pressing tools for pressfitting systems: Date 14.10.2016. For the updated situation regarding suitability status check our website:

www.rems.de → Downloads → Product catalogues, brochures → REMS Catalogue.

Pressing tongs/pressing rings for additional pressfitting systems on request.

REMS pressing tongs

REMS pressing rings

Accessories for REMS radial presses (except for REMS Mini-Press ACC, REMS Mini-Press 22 V ACC) and suitable radial presses of other makes

System	Pressing contour	Art.-No.
EFFEBI TOF	TH 16*	570460
MULTIPINZA	TH 18*	570465
	TH 20*	570470
	TH 26*	570475
	TH 32	570480
	TH 40	570485
	TH 50 (S)	572400
	TH 63 (S)	572405
	F 16*	570715
	F 18*	570720
	F 20*	570725
	F 26*	570730
	F 32	570735
	Fz 40	570742
	Fz 50	570747
	F 63 (S)	572385
	H 16*	570320
	H 18*	570340
	H 20*	570350
	H 26*	570370
	H 32	570380
	H 40 (4G)	570390
	U 16*	570765
	U 18*	570770
	U 20*	570775
	U 25*	570780
	C 26*	570750
	U 32	570785
	U 40	570790
	U 50	570795
	U 63 (PR-3B) ³⁾	572837
	U 63 (S)	572365
	B 16*	570850
	B 18*	570855
	B 20*	570860
	B 26	570870
	B 32	570880
Elkhart	VUS 1/2" (OD 15,9mm)	571770
APOLLOXPRESS	VUS 3/4" (OD 22,2mm)	571775
Fittings Copper	VUS 1" (OD 28,6mm)	571780
and Low-Lead	VUS 1 1/4" (OD 34,9mm)	571785
Brass	VUS 1 1/2" (OD 41,3mm)	571790
	VUS 2" (OD 54,0mm)	571795
Elkhart	VUSF 2 1/2" (PR-3B) ³⁾	572819
APOLLOXPRESS	(OD 66,7mm)	
LD-C Fittings	VUSF 3" (PR-3B) ³⁾	572820
Copper	(OD 79,4mm)	
	VUSF 4" (PR-3B) ³⁾	572821
	(OD 104,8mm)	
EMMETI	B 16*	570850
GERPEX-	B 20*	570860
FIVPRESS	B 26	570870
	B 32	570880
	F 16*	570715
	F 20*	570725
	H 16*	570320
	H 20*	570350
	TH 16*	570460
	TH 20*	570470
	TH 26*	570475
	TH 32	570480
	TH 40	570485
	TH 50 (S)	572400
	TH 63 (S)	572405
	U 16*	570765
	U 20*	570775
EMPUR	TH 14*	570455
	TH 15*	570457
	TH 16*	570460
	TH 17*	570462
	TH 20*	570470
	TH 25*	570495
EURACCORDI	M 15	570110
SYCPRESS	M 18	570120
STAINLESS	M 22	570130
STEEL PRESS	M 28	570140
FITTINGS	M 35	570150
	M 42 (PR-3S) ³⁾	572706
	M 54 (PR-3S) ³⁾	572708
	M 15 45° (PR-2B) ³⁾	574522
	M 18 45° (PR-2B) ³⁾	574524
	M 22 45° (PR-2B) ³⁾	574526
	M 28 45° (PR-2B) ³⁾	574528
	M 35 45° (PR-2B) ³⁾	574530
EURACCORDI	M 15	570110
SYCPRESS	M 18	570120
CARBON STEEL	M 22	570130
PRESS FITTINGS	M 28	570140
	M 35	570150
	M 42 (PR-3S) ³⁾	572706
	M 54 (PR-3S) ³⁾	572708
	M 15 45° (PR-2B) ³⁾	574522
	M 18 45° (PR-2B) ³⁾	574524
	M 22 45° (PR-2B) ³⁾	574526
	M 28 45° (PR-2B) ³⁾	574528
	M 35 45° (PR-2B) ³⁾	574530

System	Pressing contour	Art.-No.
EUROTUBI	M 12	570100
Europa C-STAH	M 15	570110
PRESSFITTING	M 18	570120
SISTEM ¹⁾	M 22	570130
	M 28	570140
	M 35	570150
	M 42 (PR-3S) ³⁾	572706
	M 54 (PR-3S) ³⁾	572708
	M 12 45° (PR-2B) ³⁾	574520
	M 15 45° (PR-2B) ³⁾	574522
	M 18 45° (PR-2B) ³⁾	574524
	M 22 45° (PR-2B) ³⁾	574526
	M 28 45° (PR-2B) ³⁾	574528
	M 35 45° (PR-2B) ³⁾	574530
EUROTUBI	M 15	570110
Europa INOX	M 18	570120
PRESSFITTING	M 22	570130
SISTEM ¹⁾	M 28	570140
	M 35	570150
	M 42 (PR-3S) ³⁾	572706
	M 54 (PR-3S) ³⁾	572708
	M 15 45° (PR-2B) ³⁾	574522
	M 18 45° (PR-2B) ³⁾	574524
	M 22 45° (PR-2B) ³⁾	574526
	M 28 45° (PR-2B) ³⁾	574528
	M 35 45° (PR-2B) ³⁾	574530
Evans	VAU 15 (1/2")	572687
Components	VAU 20 (3/4")	572689
Presslok	VAU 25 (1")	572691
	ECl 1 1/2"	571932
	ECl 2" (4G)	571934
	ECl 2 1/2" XL (PR-3S) ³⁾ 7)	579104
	ECl 3" XL (PR-3S) ³⁾ 7)	579105
	ECl 4" XL (PR-3S) ³⁾ 7)	579106
FAR Rubinetterie	TH 14*	570455
PRESSFAR	TH 16*	570460
	TH 17*	570462
	TH 18*	570465
	TH 20*	570470
	TH 25*	570495
	TH 26*	570475
	TH 32	570480
	TH 40	570485
	TH 50 (S)	572400
	TH 63 (S)	572405
	H 14*	570310
	H 16*	570320
	H 18*	570340
	H 20*	570350
	H 26*	570370
	H 32	570380
	H 40 (4G)	570390
	U 14*	570760
	U 16*	570765
	U 18*	570770
	U 20*	570775
	U 25*	570780
	U 32	570785
	U 40	570790
	U 50	570795
	U 63 (PR-3B) ³⁾	572837
	U 63 (S)	572365
F.B.Q. BARONIO	V 12	570107
BQ press	V 14	570112
	V 15	570115
	V 16	570117
	V 18	570125
	V 22	570135
	V 28	570145
	V 35	570155
	V 42	570165
	V 54	570175
	V 12 45° (PR-2B) ³⁾	574502
	V 14 45° (PR-2B) ³⁾	574532
	V 15 45° (PR-2B) ³⁾	574504
	V 16 45° (PR-2B) ³⁾	574534
	V 18 45° (PR-2B) ³⁾	574506
	V 22 45° (PR-2B) ³⁾	574508
	V 28 45° (PR-2B) ³⁾	574510
	V 35 45° (PR-2B) ³⁾	574512
F.B.Q. BARONIO	V 15	570115
BQ press	V 18	570125
carbon steel	V 22	570135
	V 28	570145
	V 35	570155
	V 42	570165
	V 54	570175
	V 15 45° (PR-2B) ³⁾	574504
	V 18 45° (PR-2B) ³⁾	574506
	V 22 45° (PR-2B) ³⁾	574508
	V 28 45° (PR-2B) ³⁾	574510
	V 35 45° (PR-2B) ³⁾	574512
F.B.Q. BARONIO	V 15	570115
BQ press gas	V 18	570125
	V 22	570135
	V 28	570145
	V 35	570155
	V 42	570165
	V 54	570175
	V 15 45° (PR-2B) ³⁾	574504
	V 18 45° (PR-2B) ³⁾	574506
	V 22 45° (PR-2B) ³⁾	574508
	V 28 45° (PR-2B) ³⁾	574510
	V 35 45° (PR-2B) ³⁾	574512

System	Pressing contour	Art.-No.
Fercofloor	RFz 16*	571325
DUO Press	RFz 20*	571330
FERCO PEX	RFz 25	571335
	RFz 32	571340
	TH 16*	570460
	TH 20*	570470
	TH 25*	570495
	TH 32	570480
Fercofloor	RFz 16*	571325
DUO Press	RFz 20*	571330
MULTIFER	RFz 25	571335
	RFz 32	571340
	TH 16*	570460
	TH 20*	570470
	TH 25*	570495
	TH 32	570480
FILINOX	FTB 15	571432
Filpress	FTB 18	571434
	FTB 22	571436
	FTB 28	571438
	FTB 35	571440
	M 42 (4G)	570160
	M 54 (4G)	570170
	M 42 (PR-3S) ³⁾	572706
	M 54 (PR-3S) ³⁾	572708
FILINOX	M 15	570110
Instalpress	M 18	570120
Steel	M 22	570130
	M 28	570140
	M 35	570150
	M 42 (4G)	570160
	M 54 (4G)	570170
	M 42 (PR-3S) ³⁾	572706
	M 54 (PR-3S) ³⁾	572708
	M 15 45° (PR-2B) ³⁾	574522
	M 18 45° (PR-2B) ³⁾	574524
	M 22 45° (PR-2B) ³⁾	574526
	M 28 45° (PR-2B) ³⁾	574528
	M 35 45° (PR-2B) ³⁾	574530
FILINOX	M 15	570110
Instalpress	M 18	570120
Inox	M 22	570130
	M 28	570140
	M 35	570150
	M 42 (4G)	570160
	M 54 (4G)	570170
	M 42 (PR-3S) ³⁾	572706
	M 54 (PR-3S) ³⁾	572708
	M 15 45° (PR-2B) ³⁾	574522
	M 18 45° (PR-2B) ³⁾	574524
	M 22 45° (PR-2B) ³⁾	574526
	M 28 45° (PR-2B) ³⁾	574528
	M 35 45° (PR-2B) ³⁾	574530
Fittings Estándar	RFz 16*	571325
ECO-PRESS	RFz 20*	571330
	RFz 25	571335
	RFz 32	571340
Fittings Estándar	RFz 16*	571325
MULTICAPA	RFz 18*	571327
	RFz 20*	571330
	RFz 25	571335
	RFz 32	571340
Fittings Estándar	RFz 16*	571325
PE-X	RFz 20*	571330
	RFz 25	571335
	RFz 32	571340
FOHS	TH 16*	570460
HEIZTECHNIK	TH 20*	570470
FOHSPRESS	TH 26*	570475
	TH 32	570480
FORNARA	B 16*	570850
ForPress	B 20*	570860
	B 26	570870
	B 32	570880
	F 16*	570715
	F 20*	570725
	F 26*	570730
	F 32	570735
	H 16*	570320
	H 20*	570350
	H 26*	570370
	H 32	570380
	TH 16*	570460
	TH 20*	570470
	TH 26*	570475
	TH 32	570480
	TH 32	570480
	U 16*	570765
	U 20*	570775
	U 32	570785
FRABO	V 12	570107
CHROMEPPRESS	V 15	570115
	V 18	570125
	V 22	570135
	V 12 45° (PR-2B) ³⁾	574502
	V 15 45° (PR-2B) ³⁾	574504
	V 18 45° (PR-2B) ³⁾	574506
	V 22 45° (PR-2B) ³⁾	574508

REMS pressing tongs REMS pressing rings

Accessories for REMS radial presses (except for REMS Mini-Press ACC, REMS Mini-Press 22 V ACC) and suitable radial presses of other makes

System	Pressing contour	Art.-No.
FRABO	V 12	570107
FRABOPRESS	V 15	570115
C-STEEL	V 18	570125
Securfrabo	V 22	570135
	V 28	570145
	V 35	570155
	V 42	570165
	V 54	570175
	M 76,1 XL (PR-3S) ³⁾ 7)	579101
	M 88,9 XL (PR-3S) ³⁾ 7)	579102
	M 108,0 XL (PR-3S) ³⁾ 7)	579103
	V 12 45° (PR-2B) ³⁾	574502
	V 15 45° (PR-2B) ³⁾	574504
	V 18 45° (PR-2B) ³⁾	574506
	V 22 45° (PR-2B) ³⁾	574508
	V 28 45° (PR-2B) ³⁾	574510
	V 35 45° (PR-2B) ³⁾	574512
FRABO	V 15	570115
FRABOPRESS	V 18	570125
C-STEEL GAS	V 22	570135
	V 28	570145
	V 35	570155
	V 15 45° (PR-2B) ³⁾	574504
	V 18 45° (PR-2B) ³⁾	574506
	V 22 45° (PR-2B) ³⁾	574508
	V 28 45° (PR-2B) ³⁾	574510
	V 35 45° (PR-2B) ³⁾	574512
FRABO	V 12	570107
FRABOPRESS	V 15	570115
INOX 316	V 18	570125
	V 22	570135
	V 28	570145
	V 35	570155
	V 42	570165
	V 54	570175
	M 76,1 XL (PR-3S) ³⁾ 7)	579101
	M 88,9 XL (PR-3S) ³⁾ 7)	579102
	M 108,0 XL (PR-3S) ³⁾ 7)	579103
	V 12 45° (PR-2B) ³⁾	574502
	V 15 45° (PR-2B) ³⁾	574504
	V 18 45° (PR-2B) ³⁾	574506
	V 22 45° (PR-2B) ³⁾	574508
	V 28 45° (PR-2B) ³⁾	574510
	V 35 45° (PR-2B) ³⁾	574512
FRABO	V 15	570115
FRABOPRESS	V 18	570125
INOX 316 GAS	V 22	570135
	V 28	570145
	V 35	570155
	V 42	570165
	V 54	570175
	V 12 45° (PR-2B) ³⁾	574502
	V 15 45° (PR-2B) ³⁾	574504
	V 18 45° (PR-2B) ³⁾	574506
	V 22 45° (PR-2B) ³⁾	574508
	V 28 45° (PR-2B) ³⁾	574510
	V 35 45° (PR-2B) ³⁾	574512
FRABO	H 16*	570320
FRABOPRESS	H 20*	570350
MULTI-BRASS (MB)	TH 16*	570460
	TH 20*	570470
	TH 26*	570475
	TH 32	570480
	U 16*	570765
	U 20*	570775
FRABO	H 16*	570320
FRABOPRESS	H 20*	570350
MULTI-PLUS (MP)	H 26*	570370
	U 16*	570765
	U 20*	570775
	C 26*	570750
FRABO	V 22	570135
FRABOPRESS	V 28	570145
NEXT	V 22 45° (PR-2B) ³⁾	574508
	V 28 45° (PR-2B) ³⁾	574510

System	Pressing contour	Art.-No.
FRABO	V 12	570107
FRABOPRESS	V 15	570115
RAME (Cu)	V 18	570125
	V 22	570135
	V 28	570145
	V 35	570155
	V 42	570165
	V 54	570175
	M 76,1 XL (PR-3S) ³⁾ 7)	579101
	M 88,9 XL (PR-3S) ³⁾ 7)	579102
	M 108,0 XL (PR-3S) ³⁾ 7)	579103
	V 12 45° (PR-2B) ³⁾	574502
	V 15 45° (PR-2B) ³⁾	574504
	V 18 45° (PR-2B) ³⁾	574506
	V 22 45° (PR-2B) ³⁾	574508
	V 28 45° (PR-2B) ³⁾	574510
	V 35 45° (PR-2B) ³⁾	574512
FRABO	V 12	570107
FRABOPRESS	V 15	570115
RAME (Cu)	V 18	570125
	V 22	570135
	V 28	570145
	V 35	570155
	V 42	570165
	V 54	570175
	V 12 45° (PR-2B) ³⁾	574502
	V 15 45° (PR-2B) ³⁾	574504
	V 18 45° (PR-2B) ³⁾	574506
	V 22 45° (PR-2B) ³⁾	574508
	V 28 45° (PR-2B) ³⁾	574510
	V 35 45° (PR-2B) ³⁾	574512
FRABO	V 15	570115
SOLARPRESS	V 18	570125
	V 22	570135
	V 28	570145
	V 35	570155
	V 15 45° (PR-2B) ³⁾	574504
	V 18 45° (PR-2B) ³⁾	574506
	V 22 45° (PR-2B) ³⁾	574508
	V 28 45° (PR-2B) ³⁾	574510
	V 35 45° (PR-2B) ³⁾	574512
FRABO FRABO	M 22	570130
TS PRESS	M 22 45° (PR-2B) ³⁾	574526
	V 22	570135
	V 22 45° (PR-2B) ³⁾	574508
Fränkische alpeX-duo	B 16*	570850
	B 18*	570855
	B 20*	570860
	B 26	570870
	B 32	570880
	F 16*	570717
	F 18*	570720
	F 20*	570727
	F 26*	570730
	F 32	570735
	TH 16*	570460
	TH 18*	570465
	TH 20*	570470
	TH 26*	570475
	TH 32	570480
Fränkische alpeX F50 PROFIL	F 16*	570717
	F 20*	570727
	F 26*	570730
	F 32	570735
	H 16*	570320
	H 20*	570350
	H 26*	570370
	H 32	570380
	TH 16*	570460
	TH 20*	570470
	TH 26*	570475
	TH 32	570480
	U 16*	570765
	U 20*	570775
(DN 26)	U 25*	570780
	U 32	570785
	VP 16*	570910
	VP 20*	570915
	VP 32	570925
Fränkische alpeX-gas ²⁾	F 20 ²⁾	570727
	F 26 ²⁾	570730
	F 32 ²⁾	570735
Fränkische alpeX L	Fz 40	570742
	Fz 50	570747
	F 63 (S)	572385
	F 75 (PR-3B) ³⁾	572830

System	Pressing contour	Art.-No.
gabotherm H+S	TH 10*	570467
	TH 12*	570452
	TH 14*	570455
	TH 15*	570457
	TH 16*	570460
	TH 17*	570462
	TH 18*	570465
	TH 20*	570470
	TH 25*	570495
	TH 26*	570475
	TH 32	570480
	TH 40	570485
	TH 50 (S)	572400
	TH 63 (S)	572405
Geberit Mapress	M 12	570100
C-STAHl	M 15	570110
	M 18	570120
	M 22	570130
	M 28	570140
	M 35	570150
	M 42 (4G)	570160
	M 54 (4G)	570170
	M 42 (PR-3S) ³⁾	572706
	M 54 (PR-3S) ³⁾	572708
	M 76,1 XL (PR-3S) ³⁾ 7)	579101
	M 88,9 XL (PR-3S) ³⁾ 7)	579102
	M 108,0 XL (PR-3S) ³⁾ 7)	579103
	M 12 45° (PR-2B) ³⁾	574520
	M 15 45° (PR-2B) ³⁾	574522
	M 18 45° (PR-2B) ³⁾	574524
	M 22 45° (PR-2B) ³⁾	574526
	M 28 45° (PR-2B) ³⁾	574528
	M 35 45° (PR-2B) ³⁾	574530
Geberit Mapress	M 12	570100
EDELSTAHl	M 15	570110
	M 18	570120
	M 22	570130
	M 28	570140
	M 35	570150
	M 42 (4G)	570160
	M 54 (4G)	570170
	M 42 (PR-3S) ³⁾	572706
	M 54 (PR-3S) ³⁾	572708
	M 76,1 XL (PR-3S) ³⁾ 7)	579101
	M 88,9 XL (PR-3S) ³⁾ 7)	579102
	M 108,0 XL (PR-3S) ³⁾ 7)	579103
	M 12 45° (PR-2B) ³⁾	574520
	M 15 45° (PR-2B) ³⁾	574522
	M 18 45° (PR-2B) ³⁾	574524
	M 22 45° (PR-2B) ³⁾	574526
	M 28 45° (PR-2B) ³⁾	574528
	M 35 45° (PR-2B) ³⁾	574530
Geberit Mapress	M 15	570110
EDELSTAHl Gas	M 18	570120
	M 22	570130
	M 28	570140
	M 35	570150
	M 42 (PR-3S) ³⁾	572706
	M 54 (PR-3S) ³⁾	572708
	M 15 45° (PR-2B) ³⁾	574522
	M 18 45° (PR-2B) ³⁾	574524
	M 22 45° (PR-2B) ³⁾	574526
	M 28 45° (PR-2B) ³⁾	574528
	M 35 45° (P-R-2B) ³⁾	574530
Geberit Mapress	M 12	570100
KUPFER	M 15	570110
	M 18	570120
	M 22	570130
	M 28	570140
	M 35	570150
	M 42 (4G)	570160
	M 54 (4G)	570170
	M 42 (PR-3S) ³⁾	572706
	M 54 (PR-3S) ³⁾	572708
	M 76,1 XL (PR-3S) ³⁾ 7)	579101
	M 88,9 XL (PR-3S) ³⁾ 7)	579102
	M 108,0 XL (PR-3S) ³⁾ 7)	579103
	M 12 45° (PR-2B) ³⁾	574520
	M 15 45° (PR-2B) ³⁾	574522
	M 18 45° (PR-2B) ³⁾	574524
	M 22 45° (PR-2B) ³⁾	574526
	M 28 45° (PR-2B) ³⁾	574528
	M 35 45° (PR-2B) ³⁾	574530

Pressfitting systems for gas installations must only be pressed with pressing tongs/pressing rings which are highlighted in yellow. Observe the national regulations.

* These pressing tongs also fit the manual radial press REMS Eco-Press. Observe the national regulations.

- 1) Only pressing tongs from designation "108" (1st quarter of 2008), "208" (2nd quarter of 2008) etc. can be used. The designation is stamped on every pressing jaw.
- 2) For this pressfitting system producing a pressing joint with manual radial presses is not permitted.
- 3) Adapter tongs are required for driving pressing rings (PR), see page 170.
- 4) Press fittings made of red bronze (ProPress XL) must be pressed with pressing rings with press contour VUSR, copper fittings (ProPress XL-C) and stainless steel fittings (ProPress XL-S) with pressing rings with press contour VUSF.
- 5) For taking suitable pressing inserts.
- 6) Press fittings made of red bronze (Sanpress XL) must be pressed with pressing rings with press contour VR, copper fittings (Profipress XL, Profipress G XL), carbon steel (Prestabo XL) and stainless steel fittings (Sanpress Inox XL, Sanpress Inox G XL) with pressing rings with press contour VF.
- 7) Driven by REMS Power-Press XL.

The suitability of REMS pressing tools for pressfitting systems: Date 14.10.2016. For the updated situation regarding suitability status check our website: www.rems.de → Downloads → Product catalogues, brochures → REMS Catalogue.

Pressing tongs/pressing rings for additional pressfitting systems on request.

REMS pressing tongs REMS pressing rings

Accessories for REMS radial presses (except for REMS Mini-Press ACC, REMS Mini-Press 22 V ACC) and suitable radial presses of other makes

System	Pressing contour	Art.-No.	
Geberit Mapress KUPFER Gas	M 15	570110	
	M 18	570120	
	M 22	570130	
	M 28	570140	
	M 35	570150	
	M 42 (PR-3S) ³⁾	572706	
	M 54 (PR-3S) ³⁾	572708	
	M 15 45° (PR-2B) ³⁾	574522	
	M 18 45° (PR-2B) ³⁾	574524	
	M 22 45° (PR-2B) ³⁾	574526	
	M 28 45° (PR-2B) ³⁾	574528	
	M 35 45° (PR-2B) ³⁾	574530	
	Geberit Mepla	G 16*	570400
		G 20*	570410
G 26*		570420	
G 32		570430	
G 40		570440	
G 50		570450	
G 63 (S)		572470	
Geberit Mepla Therm	G 16*	570400	
	G 20*	570410	
	G 26*	570420	
General Fittings Serie 5S00	B 16*	570850	
	B 18*	570855	
	B 20*	570860	
	B 26	570870	
	B 32	570880	
	F 16*	570717	
	F 20*	570727	
	F 26*	570730	
	H 16*	570320	
	H 20*	570340	
	H 25*	570350	
	H 26*	570360	
	H 32	570370	
	H 32	570380	
	H 40 (4G)	570390	
	TH 16*	570460	
	TH 18*	570465	
	TH 20*	570470	
	TH 25*	570495	
	TH 26*	570475	
	TH 32	570480	
	TH 40	570485	
	TH 50 (S)	572400	
	TH 63 (S)	572405	
	U 16*	570765	
	U 18*	570770	
	U 20*	570775	
	U 25*	570780	
U 32	570785		
U 40	570790		
U 50	570795		
U 63 (S)	572365		
U 63 (PR-3B) ³⁾	572837		
General Fittings Trident	B 16*	570850	
	B 20*	570860	
	B 26	570870	
	B 32	570880	
	F 16*	570717	
	F 20*	570727	
	F 26*	570730	
	H 16*	570320	
	H 20*	570350	
	H 26*	570370	
	H 32	570380	
	TH 16*	570460	
	TH 20*	570470	
	TH 26*	570475	
	TH 32	570480	
U 16*	570765		
U 20*	570775		
U 32	570785		
General Fittings Trident Gas	TH 16*	570460	
	TH 20*	570470	
	TH 26*	570475	
	TH 32	570480	
	H 16*	570320	
	H 20*	570350	
	H 26*	570370	
	H 32	570380	
	U 16*	570765	
	U 20*	570775	
	U 32	570785	
Giacomini Raccordi RM Giacomini	H 16*	570320	
	H 20*	570350	
	H 26*	570370	
Giacomini	H 32	570380	
	TH 16*	570460	
	TH 20*	570470	
	TH 26*	570475	
	TH 32	570480	
	THL 32	570487	
	U 16*	570765	
	U 20*	570775	
	U 32	570785	
	U 40	570790	
	U 50	570795	
	U 63 (S)	572365	

System	Pressing contour	Art.-No.	
Giacomini RM MULTIGAS	H 16*	570320	
	H 20*	570350	
	H 26*	570370	
	H 32	570380	
	TH 16*	570460	
	TH 20*	570470	
	TH 26*	570475	
	TH 32	570480	
	THL 32	570487	
	U 16*	570765	
	U 20*	570775	
	U 32	570785	
	Giacomini valvole Giacomini serie R850V	V 15	570115
		V 18	570125
		V 22	570135
		V 28	570145
		V 35	570155
		V 42	570165
V 54		570175	
V 15 45° (PR-2B) ³⁾		574504	
V 18 45° (PR-2B) ³⁾		574506	
V 22 45° (PR-2B) ³⁾		574508	
V 28 45° (PR-2B) ³⁾		574510	
V 35 45° (PR-2B) ³⁾		574512	
SA 15		570935	
SA 18		570940	
SA 22		570945	
SA 28		570950	
SA 35		570955	
M 15		570110	
M 18	570120		
M 22	570130		
M 28	570140		
M 35	570150		
M 15 45° (PR-2B) ³⁾	574522		
M 18 45° (PR-2B) ³⁾	574524		
M 22 45° (PR-2B) ³⁾	574526		
M 28 45° (PR-2B) ³⁾	574528		
M 35 45° (PR-2B) ³⁾	574530		
Golan Pipe Systems (Scandinavia) Alu-Pres	U 16*	570765	
	U 20*	570775	
	U 25*	570780	
	U 32	570785	
	U 40	570790	
	U 50	570795	
	U 63 (S)	572365	
Grinnell G-PRESS Copper Fittings	VUS 1/2" (OD 15,9mm)	571770	
	VUS 3/4" (OD 22,2mm)	571775	
	VUS 1" (OD 28,6mm)	571780	
	VUS 1 1/4" (OD 34,9mm)	571785	
	VUS 1 1/2" (OD 41,3mm)	571790	
	VUS 2" (OD 54,0mm)	571795	
	VUSF 2 1/2" (PR-3B) ³⁾ (OD 66,7mm)	572819	
VUSF 3" (PR-3B) ³⁾ (OD 79,4mm)	572820		
VUSF 4" (PR-3B) ³⁾ (OD 104,8mm)	572821		
GS Wärmesysteme System TH	TH 14*	570455	
	TH 16*	570460	
	TH 20*	570470	
	TH 26*	570475	
	TH 32	570480	
	TH 40	570485	
	TH 50 (S)	572400	
	TH 63 (S)	572405	
	V 15	570115	
	V 18	570125	
GS Wärmesysteme System V	V 15	570115	
	V 18	570125	
	V 22	570135	
	V 28	570145	
	V 35	570155	
	V 15 45° (PR-2B) ³⁾	574504	
	V 18 45° (PR-2B) ³⁾	574506	
	V 22 45° (PR-2B) ³⁾	574508	
	V 28 45° (PR-2B) ³⁾	574510	
	V 35 45° (PR-2B) ³⁾	574512	
GSP Group USMatrix	U 16*	570765	
	U 20*	570775	
	U 32	570785	
HAGOS	TH 16*	570460	
HakaGerodur HakaGerodur- System	TH 10*	570467	
	TH 11,6*	570482	
	TH 12*	570452	
	TH 14*	570455	
	TH 16*	570460	
	TH 17*	570462	
	TH 18*	570465	
	TH 20*	570470	
	TH 26*	570475	
HakaGerodur HAKASAN	TH 16*	570460	
	TH 20*	570470	
	TH 25*	570495	
	TH 26*	570475	
	TH 32	570480	
Harden 2000 B-Hidro	TH 40	570485	
	TH 50 (S)	572400	
	TH 63 (S)	572405	
	TH 16*	570460	
	TH 20*	570470	
Harden 2000 Poly-Pex 2000	TH 26*	570475	
	TH 14*	570455	
	TH 16*	570460	
	TH 17*	570462	
	TH 18*	570465	
	TH 20*	570470	
	TH 26*	570475	
	THL 32	570487	
	TH 40	570485	
	TH 50 (S)	572400	
	TH 63 (S)	572405	

System	Pressing contour	Art.-No.	
Harden 2000 Poly-Pex Gas	TH 16*	570460	
	TH 20*	570470	
	TH 26*	570475	
	THL 32	570487	
HASTINIK Hastinik/Hitpress	M 15	570110	
	M 18	570120	
	M 22	570130	
	M 28	570140	
	M 35	570150	
	M 42 (4G)	570160	
	M 54 (4G)	570170	
	M 42 (PR-3S) ³⁾	572706	
	M 54 (PR-3S) ³⁾	572708	
	M 76,1 XL (PR-3S) ³⁾⁷⁾	579101	
	M 88,9 XL (PR-3S) ³⁾⁷⁾	579102	
heima-press	M 108,0 XL (PR-3S) ³⁾⁷⁾	579103	
	M 15 45° (PR-2B) ³⁾	574522	
	M 18 45° (PR-2B) ³⁾	574524	
	M 22 45° (PR-2B) ³⁾	574526	
	M 28 45° (PR-2B) ³⁾	574528	
	M 35 45° (PR-2B) ³⁾	574530	
	TH 16*	570460	
	TH 20*	570470	
	TH 26*	570475	
	TH 32	570480	
	TH 40	570485	
	TH 50 (S)	572400	
	TH 63 (S)	572405	
	HELIROMA Klimapress	U 16*	570765
U 18*		570770	
U 20*		570775	
U 25*		570780	
U 32		570785	
U 40		570790	
HELIROMA romapress	U 50	570795	
	U 63 (PR-3B) ³⁾	572837	
	U 63 (S)	572365	
	U 75 (PR-3B) ³⁾	572828	
	RFz 16*	571325	
	RFz 20*	571330	
	RFz 25	571335	
	RFz 32	571340	
	Henco	TH 14*	570455
		TH 16*	570460
		TH 18*	570465
TH 20*		570470	
TH 26*		570475	
Henco Gas	HE 32	571900	
	HE 40	571902	
	TH 16*	570460	
	TH 20*	570470	
Herotec TEMPUS-PRESS PLUS	TH 26*	570475	
	HE 32	571900	
	HE 40	571902	
	TH 16*	570460	
	TH 20*	570470	
	TH 25*	570495	
	TH 32	570480	
	U 16*	570765	
	U 20*	570775	
	U 25*	570780	
	U 32	570785	
	U 40	570790	
	U 50	570795	
	U 63 (S)	572365	
U 63 (PR-3B) ³⁾	572837		
U 75 (PR-3B) ³⁾	572828		
Herz pipefix	TH 10*	570467	
	TH 16*	570460	
	TH 20*	570470	
	TH 26*	570475	
	TH 32	570480	
	TH 40	570485	
	TH 50 (S)	572400	
	TH 63 (S)	572405	
	TH 75 (PR-3B) ³⁾	572829	
	HITEC Sistema Multistrato	TH 14*	570455
		TH 16*	570460
TH 18*		570465	
TH 20*		570470	
TH 26*		570475	
TH 32		570480	
Hopewell press fit system	TH 40	570485	
	TH 50 (S)	572400	
	M 15	570110	
	M 18	570120	
	M 22	570130	
	M 28	570140	
	M 35	570150	
	M 42 (4G)	570160	
	M 54 (4G)	570170	
	M 42 (PR-3S) ³⁾	572706	
	M 54 (PR-3S) ³⁾	572708	

REMS pressing tongs
REMS pressing rings

Accessories for REMS radial presses (except for REMS Mini-Press ACC, REMS Mini-Press 22 V ACC) and suitable radial presses of other makes

System	Pressing contour	Art.-No.	
hp-praski BAVARIA-press	TH 10*	570467	
	TH 14*	570455	
	TH 16*	570460	
	TH 20*	570470	
	TH 26*	570475	
	TH 32	570480	
	TH 40	570485	
	TH 50 (S)	572400	
	TH 63 (S)	572405	
	IBP >B< Flex	U 16*	570765
U 18*		570770	
U 20*		570775	
U 25*		570780	
U 32		570785	
IBP >B< Press		V 12	570107
	V 14	570112	
	V 15	570115	
	V 16	570117	
	V 18	570125	
	V 22	570135	
	V 28	570145	
	V 35	570155	
	V 42	570165	
	V 54	570175	
	V 12 45° (PR-2B) ³⁾	574502	
	V 14 45° (PR-2B) ³⁾	574532	
	V 15 45° (PR-2B) ³⁾	574504	
	V 16 45° (PR-2B) ³⁾	574534	
	V 18 45° (PR-2B) ³⁾	574506	
	V 22 45° (PR-2B) ³⁾	574508	
	V 28 45° (PR-2B) ³⁾	574510	
	V 35 45° (PR-2B) ³⁾	574512	
	IBP >B< Press Carbon	V 12	570107
		V 15	570115
V 18		570125	
V 22		570135	
V 28		570145	
V 35		570155	
V 42		570165	
V 54		570175	
V 12 45° (PR-2B) ³⁾		574502	
V 15 45° (PR-2B) ³⁾		574504	
V 18 45° (PR-2B) ³⁾		574506	
V 22 45° (PR-2B) ³⁾		574508	
V 28 45° (PR-2B) ³⁾		574510	
V 35 45° (PR-2B) ³⁾		574512	
IBP >B< Press Gas	V 15	570115	
	V 18	570125	
	V 22	570135	
	V 28	570145	
	V 35	570155	
	V 42	570165	
	V 54	570175	
	V 15 45° (PR-2B) ³⁾	574504	
	V 18 45° (PR-2B) ³⁾	574506	
	V 22 45° (PR-2B) ³⁾	574508	
IBP >B< Press Inox	V 15	570115	
	V 18	570125	
	V 22	570135	
	V 28	570145	
	V 35	570155	
	V 42	570165	
	V 54	570175	
	V 15 45° (PR-2B) ³⁾	574504	
	V 18 45° (PR-2B) ³⁾	574506	
	V 22 45° (PR-2B) ³⁾	574508	
IBP >B< Press Solar	V 15	570115	
	V 18	570125	
	V 22	570135	
	V 28	570145	
	V 35	570155	
	V 42	570165	
	V 54	570175	
	V 15 45° (PR-2B) ³⁾	574504	
	V 18 45° (PR-2B) ³⁾	574506	
	V 22 45° (PR-2B) ³⁾	574508	

System	Pressing contour	Art.-No.	
ICMA Sempiter	H 16*	570320	
	H 20*	570350	
	H 26*	570370	
	H 32	570380	
	H 40 (4G)	570390	
	TH 16*	570460	
	TH 20*	570470	
	TH 26*	570475	
	TH 32	570480	
	TH 40	570485	
	TH 50 (S)	572400	
	TH 63 (S)	572405	
	U 16*	570765	
	U 20*	570775	
ICMA Sempigas	TH 16*	570460	
	TH 20*	570470	
	TH 26*	570475	
	TH 32	570480	
	Idrosanitaria Bonomi	TH 16*	570460
		TH 20*	570470
		TH 26*	570475
		Idrosanitaria Bonomi	TH 16*
	TH 18*		570465
	TH 20*		570470
TH 26*	570475		
Idropress	TH 40	570485	
	TH 50 (S)	572400	
	TH 63 (S)	572405	
	IDROSISTEMI Ta-Press	TH 16*	570460
		TH 20*	570470
		TH 26*	570475
		TH 32	570480
		TH 40	570485
		TH 50 (S)	572400
		TH 63 (S)	572405
F 16*		570717	
F 20*		570727	
F 26*		570730	
ILTA INOX/CHIBRO Pressfitting Cuni	F 32	570735	
	Fz 40	570742	
	F 63 (S)	572385	
	H 16*	570320	
	H 20*	570350	
	H 26*	570370	
	H 32	570380	
	H 40 (4G)	570390	
	U 16*	570765	
	U 20*	570775	
	U 32	570785	
	U 40	570790	
	U 50	570795	
	U 63 (S)	572365	
B 16*	570850		
B 20*	570860		
B 26	570870		
B 32	570880		
M 12	570100		
M 15	570110		
M 18	570120		
M 22	570130		
M 28	570140		
M 35	570150		
M 42 (PR-3S) ³⁾	572706		
M 54 (PR-3S) ³⁾	572708		
M 76,1 XL (PR-3S) ^{3) 7)}	579101		
M 88,9 XL (PR-3S) ^{3) 7)}	579102		
M 108,0 XL (PR-3S) ^{3) 7)}	579103		
M 12 45° (PR-2B) ³⁾	574520		
M 15 45° (PR-2B) ³⁾	574522		
M 18 45° (PR-2B) ³⁾	574524		
M 22 45° (PR-2B) ³⁾	574526		
M 28 45° (PR-2B) ³⁾	574528		
M 35 45° (PR-2B) ³⁾	574530		

System	Pressing contour	Art.-No.	
ILTA INOX/CHIBRO Pressfitting inox	M 15	570110	
	M 18	570120	
	M 22	M 22	570130
		M 28	570140
		M 35	570150
		M 42 (PR-3S) ³⁾	572706
		M 54 (PR-3S) ³⁾	572708
		M 76,1 XL (PR-3S) ^{3) 7)}	579101
		M 88,9 XL (PR-3S) ^{3) 7)}	579102
		M 108,0 XL (PR-3S) ^{3) 7)}	579103
		M 15 45° (PR-2B) ³⁾	574522
		M 18 45° (PR-2B) ³⁾	574524
	M 22 45° (PR-2B) ³⁾	574526	
	M 28 45° (PR-2B) ³⁾	574528	
	M 35 45° (PR-2B) ³⁾	574530	
	IPA IPANA Press	TH 10*	570467
		TH 11.6*	570482
		TH 12*	570452
		TH 14*	570455
		TH 15*	570457
TH 16*		570460	
TH 17*		570462	
TH 18*		570465	
TH 20*		570470	
TH 22*		570472	
IPA THu IPANA Press	TH 25*	570495	
	TH 26*	570475	
	TH 28	570477	
	TH 32	570480	
	TH 40	570485	
	TH 50 (S)	572400	
	TH 63 (S)	572405	
	TH 75 (PR-3B) ³⁾	572829	
	TH 16*	570460	
	TH 20*	570470	
IPALPEX (Industrie du Plastique et Accessoires)	TH 26*	570475	
	TH 32	570480	
	TH 40	570485	
	U 16*	570765	
	U 20*	570775	
	H 16*	570320	
	H 20*	570350	
	H 26*	570370	
	H 32	570380	
	TH 14*	570455	
IPLEX PIPELINES AUSTRALIA Iplex Pro-fit	TH 16*	570460	
	TH 18*	570465	
	TH 20*	570470	
	TH 26*	570475	
	THL 32	570487	
	TH 40	570485	
	TH 50 (S)	572400	
	TH 63 (S)	572405	
	K16/P18*	572600	
	PF 22*	571980	
IPLEX PIPELINES AUSTRALIA Iplex K2	K16/P18*	572600	
	K/20*	572605	
	K/25*	572610	
	K32	572615	
	K1/40 (Gas)	572620	
	K1/50	572625	
	K16/P18*	572600	
	K/20*	572605	
	K/25*	572610	
	ISOLTUBEX ISOLPEX	Rfz 16*	571325
Rfz 20*		571330	
Rfz 25		571337	
Rfz 32		571342	
U 16*		570765	
U 20*		570775	
U 25*		570780	
U 32		570785	
U 40		570790	
U 50		570795	
ISOLTUBEX Multicapa	U 63 (PR-3B) ³⁾	572837	
	U 63 (S)	572365	
	Rfz 16*	571325	
	Rfz 20*	571330	
	Rfz 25	571337	
	Rfz 32	571342	
	U 16*	570765	
	U 20*	570775	
	U 25*	570780	
	U 32	570785	

Pressfitting systems for gas installations must only be pressed with pressing tongs/pressing rings which are highlighted in yellow.

Observe the national regulations.

* These pressing tongs also fit the manual radial press REMS Eco-Press. Observe the national regulations.

- 1) Only pressing tongs from designation "108" (1st quarter of 2008), "208" (2nd quarter of 2008) etc. can be used. The designation is stamped on every pressing jaw.
- 2) For this pressfitting system producing a pressing joint with manual radial presses is not permitted.
- 3) Adapter tongs are required for driving pressing rings (PR), see page 170.
- 4) Press fittings made of red bronze (ProPress XL) must be pressed with pressing rings with press contour VUSR, copper fittings (ProPress XL-C) and stainless steel fittings (ProPress XL-S) with pressing rings with press contour VUSF.
- 5) For taking suitable pressing inserts.
- 6) Press fittings made of red bronze (Sanpress XL) must be pressed with pressing rings with press contour VR, copper fittings (Profipress XL, Profipress G XL), carbon steel (Prestabo XL) and stainless steel fittings (Sanpress Inox XL, Sanpress Inox G XL) with pressing rings with press contour VF.
- 7) Driven by REMS Power-Press XL.

The suitability of REMS pressing tools for pressfitting systems: Date 14.10.2016. For the updated situation regarding suitability status check our website:

www.rems.de → Downloads → Product catalogues, brochures → REMS Catalogue.

Pressing tongs/pressing rings for additional pressfitting systems on request.

REMS pressing tongs REMS pressing rings

Accessories for REMS radial presses (except for REMS Mini-Press ACC, REMS Mini-Press 22 V ACC) and suitable radial presses of other makes

System	Pressing contour	Art.-No.
ISOTUBI	M 15	570110
NUMEPRESS	M 18 ¹⁾	570120
	M 22	570130
	M 28 ¹⁾	570140
	M 35	570150
	M 42 (PR-3S) ³⁾	572706
	M 54 (PR-3S) ³⁾	572708
	M 76,1 XL (PR-3S) ³⁾ 7) 579101	
	M 88,9 XL (PR-3S) ³⁾ 7) 579102	
	M 108,0 XL (PR-3S) ³⁾ 7) 579103	
	M 15 45° (PR-2B) ³⁾	574522
	M 18 45° (PR-2B) ³⁾	574524
	M 22 45° (PR-2B) ³⁾	574526
	M 28 45° (PR-2B) ³⁾	574528
	M 35 45° (PR-2B) ³⁾	574530
IVAR	B 20*	570860
ALPEX-GAS	B 26	570870
	B 32	570880
IVAR	B 14*	570845
Ivar-Press	B 16*	570850
	B 18*	570855
	B 20*	570860
	B 26	570870
	B 32	570880
	Fz 40	570742
	Fz 50	570747
	F 63 (S)	572385
IVAR	TH 16*	570460
MULTI PRESS	TH 20*	570470
GAS	TH 26*	570475
	TH 32	570480
	B 16*	570850
	B 20*	570860
	B 26	570870
	B 32	570880
IVAR	TH 16*	570460
MULTI PRESS	TH 20*	570470
GAS ITALIA	TH 26*	570475
	TH 32	570480
	H 16*	570320
	H 20*	570350
	H 26*	570370
	H 32	570380
	U 16*	570765
	U 20*	570775
	U 32	570785
IVAR	TH 16*	570460
Multi Press MP	TH 18*	570465
	TH 20*	570470
	TH 25*	570495
	TH 26*	570475
	TH 32	570480
	TH 40	570485
	TH 50 (S)	572400
	TH 63 (S)	572405
	F 16*	570717
	F 18*	570720
	F 20*	570727
	F 26*	570730
	F 32	570735
	Fz 40	570742
	Fz 50	570747
	F 63 (S)	572385
	H 16*	570320
	H 18*	570340
	H 20*	570350
	H 25*	570360
	H 26*	570370
	H 32	570380
	H 40 (4G)	570390
	U 16*	570765
	U 18*	570770
	U 20*	570775
	U 25*	570780
	C 26*	570750
	U 32	570785
	U 40	570790
	U 50	570795
	U 63 (S)	572365
	B 16*	570850
	B 18*	570855
	B 20*	570860
	B 26	570870
	B 32	570880
IVAR	TH 16*	570460
Multi Press Leak	TH 20*	570470
(MPL)	TH 26*	570475
	TH 32	570480
	F 16*	570717
	F 20*	570727
	F 26*	570730
	F 32	570735
	H 16*	570320
	H 20*	570350
	H 26*	570370
	H 32	570380
	U 16*	570765
	U 20*	570775
	C 26*	570750
	U 32	570785
	B 16*	570850
	B 20*	570860
	B 26	570870
	B 32	570880

System	Pressing contour	Art.-No.
IVAR	TH 16*	570460
Plastic Multi Press	TH 20*	570470
Leak (PMPL)	TH 26*	570475
	TH 32	570480
	F 16*	570717
	F 20*	570727
	F 26*	570730
	F 32	570735
	H 16*	570320
	H 20*	570350
	H 26*	570370
	H 32	570380
	U 16*	570765
	U 20*	570775
	C 26*	570750
	U 32	570785
	B 16*	570850
	B 20*	570860
	B 26	570870
	B 32	570880
IVAR	TH 16*	570460
Plastic Multi Press	TH 20*	570470
PMP	TH 25*	570495
	TH 26*	570475
	TH 32	570480
	F 16*	570717
	F 20*	570727
	F 26*	570730
	F 32	570735
	H 16*	570320
	H 20*	570350
	H 25*	570360
	H 26*	570370
	H 32	570380
	U 16*	570765
	U 20*	570775
	U 25*	570780
	C 26*	570750
	U 32	570785
	B 16*	570850
	B 20*	570860
	B 26	570870
	B 32	570880
Jäger - Aquatec	H 14*	570310
Aquapress H	H 16*	570320
	H 17*	570330
	H 18*	570340
	H 20*	570350
	H 26*	570370
	H 32	570380
	U 40	570790
	U 50	570795
	U 63 (S)	572365
Jäger - Aquatec	M 15	570110
C-Stahl - Press	M 18	570120
Typ M	M 22	570130
	M 28	570140
	M 35	570150
	M 42 (PR-3S) ³⁾	572706
	M 54 (PR-3S) ³⁾	572708
	M 15 45° (PR-2B) ³⁾	574522
	M 18 45° (PR-2B) ³⁾	574524
	M 22 45° (PR-2B) ³⁾	574526
	M 28 45° (PR-2B) ³⁾	574528
	M 35 45° (PR-2B) ³⁾	574530
Jäger - Aquatec	M 15	570110
Edelstahl-Press	M 18	570120
Typ M	M 22	570130
	M 28	570140
	M 35	570150
	M 42 (PR-3S) ³⁾	572706
	M 54 (PR-3S) ³⁾	572708
	M 15 45° (PR-2B) ³⁾	574522
	M 18 45° (PR-2B) ³⁾	574524
	M 22 45° (PR-2B) ³⁾	574526
	M 28 45° (PR-2B) ³⁾	574528
	M 35 45° (PR-2B) ³⁾	574530
Jäger - Aquatec	V 15	570115
Kupfer-Press	V 18	570125
Typ V	V 22	570135
	V 28	570145
	V 35	570155
	V 42	570165
	V 54	570175
	V 15 45° (PR-2B) ³⁾	574504
	V 18 45° (PR-2B) ³⁾	574506
	V 22 45° (PR-2B) ³⁾	574508
	V 28 45° (PR-2B) ³⁾	574510
	V 35 45° (PR-2B) ³⁾	574512
Jansen	TH 14*	570455
JANSEN prima	TH 16*	570460
	TH 18*	570465
	TH 20*	570470
	TH 25*	570495
	TH 26*	570475
	TH 32	570480
	TH 40	570485
	TH 50 (S)	572400
	TH 63 (S)	572405
Jaraflex-	TH 14*	570455
Presssystem	TH 16*	570460
	TH 20*	570470
	TH 25*	570495
	TH 26*	570475
	TH 32	570480
	TH 40	570485
	TH 50 (S)	572400
	TH 63 (S)	572405

System	Pressing contour	Art.-No.
KAN	U 16*	570765
KAN-therm	U 20*	570775
	U 25*	570780
	C 26*	570750
	U 32	570785
	U 40	570790
	TH 50 (S)	572400
	TH 63 (S)	572405
KAN	U 14*	570760
KAN-therm LBP	U 16*	570765
	U 20*	570775
	U 25*	570780
	C 26*	570750
	U 32	570785
	U 40	570790
	TH 14*	570455
	TH 16*	570460
	TH 20*	570470
	TH 25*	570495
	TH 26*	570475
	TH 32	570480
	TH 40	570485
	TH 50 (S)	572400
	TH 63 (S)	572405
KAN	M 15	570110
KAN-therm	M 18 ¹⁾	570120
Inox	M 22	570130
	M 28 ¹⁾	570140
	M 35	570150
	M 42 (4G)	570160
	M 54 (4G)	570170
	M 42 (PR-3S) ³⁾	572706
	M 54 (PR-3S) ³⁾	572708
	M 15 45° (PR-2B) ³⁾	574522
	M 18 45° (PR-2B) ³⁾	574524
	M 22 45° (PR-2B) ³⁾	574526
	M 28 45° (PR-2B) ³⁾	574528
	M 35 45° (PR-2B) ³⁾	574530
KAN	M 15	570110
KAN-therm	M 18 ¹⁾	570120
Steel	M 22	570130
	M 28 ¹⁾	570140
	M 35	570150
	M 42 (4G)	570160
	M 54 (4G)	570170
	M 42 (PR-3S) ³⁾	572706
	M 54 (PR-3S) ³⁾	572708
	M 15 45° (PR-2B) ³⁾	574522
	M 18 45° (PR-2B) ³⁾	574524
	M 22 45° (PR-2B) ³⁾	574526
	M 28 45° (PR-2B) ³⁾	574528
	M 35 45° (PR-2B) ³⁾	574530
KE KELIT	U 16*	570765
KELIT KELOX	U 18*	570770
	U 20*	570775
	U 25*	570780
	U 32	570785
	U 40	570790
	U 50	570795
	U 63 (S)	572365
	U 75 (PR-3B) ³⁾	572828
KE KELIT	M 15	570110
steelFIX	M 18	570120
C-Stahl	M 22	570130
	M 28	570140
	M 35	570150
	M 42 (PR-3S) ³⁾	572706
	M 54 (PR-3S) ³⁾	572708
	M 76,1 XL (PR-3S) ³⁾ 7) 579101	
	M 88,9 XL (PR-3S) ³⁾ 7) 579102	
	M 108,0 XL (PR-3S) ³⁾ 7) 579103	
	M 15 45° (PR-2B) ³⁾	574522
	M 18 45° (PR-2B) ³⁾	574524
	M 22 45° (PR-2B) ³⁾	574526
	M 28 45° (PR-2B) ³⁾	574528
	M 35 45° (PR-2B) ³⁾	574530
KE KELIT	M 15	570110
steelFIX	M 18	570120
Edelstahl	M 22	570130
	M 28	570140
	M 35	570150
	M 42 (PR-3S) ³⁾	572706
	M 54 (PR-3S) ³⁾	572708
	M 76,1 XL (PR-3S) ³⁾ 7) 579101	
	M 88,9 XL (PR-3S) ³⁾ 7) 579102	
	M 108,0 XL (PR-3S) ³⁾ 7) 579103	
	M 15 45° (PR-2B) ³⁾	574522
	M 18 45° (PR-2B) ³⁾	574524
	M 22 45° (PR-2B) ³⁾	574526
	M 28 45° (PR-2B) ³⁾	574528
	M 35 45° (PR-2B) ³⁾	574530
KEMBLA	VAU 15 (OD 12,7 mm)	572687
KemPress	VAU 20 (OD 19,1 mm)	572689
(AUS)	VAU 25 (OD 25,4 mm)	572691
	VAU 32 (OD 31,8 mm)	572693
	VAU 40 (OD 38,1 mm)	572695
	VAU 50 (OD 50,8 mm)	572697
KEMBLA	VAU 15 (OD 12,7 mm)	572687
KemPress Gas	VAU 20 (OD 19,1 mm)	572689
(AUS)	VAU 25 (OD 25,4 mm)	572691
	VAU 32 (OD 31,8 mm)	572693
	VAU 40 (OD 38,1 mm)	572695
	VAU 50 (OD 50,8 mm)	572697
KISAN	KI 16*	571360
Kisan KD	KI 20*	571370
	KI 25*	571375
	TH 16*	570460
	TH 20*	570470
	TH 25*	570495

REMS pressing tongs REMS pressing rings

Accessories for REMS radial presses (except for REMS Mini-Press ACC, REMS Mini-Press 22 V ACC) and suitable radial presses of other makes

System	Pressing contour	Art.-No.
KISAN Kisan WL	KI 16*	571360
	KI 20*	571370
	KI 25*	571375
	KI 32	571380
	TH 16*	570460
	TH 20*	570470
	TH 25*	570495
KISAN Kisan WM	KI 16*	571360
	KI 20*	571370
	KI 25*	571375
	KI 32	571380
KISAN Kisan WR	U 20*	570775
	U 25*	570780
	U 32	570785
	U 40	570790
	U 50	570795
KISAN Kistal C	M 15	570110
	M 18	570120
	M 22	570130
	M 28	570140
	M 35	570150
	M 42 (PR-3S) ³⁾	572706
	M 54 (PR-3S) ³⁾	572708
	M 15 45° (PR-2B) ³⁾	574522
	M 18 45° (PR-2B) ³⁾	574524
	M 22 45° (PR-2B) ³⁾	574526
KISAN Kistal Inox	M 15	570110
	M 18	570120
	M 22	570130
	M 28	570140
	M 35	570150
	M 42 (PR-3S) ³⁾	572706
	M 54 (PR-3S) ³⁾	572708
	M 15 45° (PR-2B) ³⁾	574522
	M 18 45° (PR-2B) ³⁾	574524
	M 22 45° (PR-2B) ³⁾	574526
KME cuprotherm CTX	TH 14*	570455
	TH 16*	570460
	TH 18*	570465
	TH 20*	570470
	TH 26*	570475
KME Q-Tec - Comap SkinPress	TH 14*	570455
	TH 16*	570460
	TH 20*	570470
	TH 26*	570475
KME Q-Tec - Oventrop Cofit	H 16 A*	570620
	H 20 A*	570650
	H 26 A*	570670
LECHAR ALCOBRAPEX	TH 16*	570460
	TH 20*	570470
	TH 26*	570475
	TH 32	570480
	TH 40	570485
LECHAR COBRAPEX	U 16*	570765
	U 20*	570775
	U 25*	570780
LEGEND-PRESS press fitting system	VUS ½" (OD 15,9mm)	571770
	VUS ¾" (OD 22,2mm)	571775
	VUS 1" (OD 28,6mm)	571780
	VUS 1¼" (OD 34,9mm)	571785
	VUS 1½" (OD 41,3mm)	571790
	VUS 2" (OD 54,0mm)	571795
	VUSF 2½" (PR-3B) ³⁾ (OD 66,7mm)	572819
	VUSF 3" (PR-3B) ³⁾ (OD 79,4mm)	572820
	VUSF 4" (PR-3B) ³⁾ (OD 104,8mm)	572821

System	Pressing contour	Art.-No.	
LK Systems LK >B<Press	V 12	570107	
	V 15	570115	
	V 18	570125	
	V 22	570135	
	V 28	570145	
	V 35	570155	
	V 42	570165	
	V 54	570175	
	V 12 45° (PR-2B) ³⁾	574502	
	V 15 45° (PR-2B) ³⁾	574504	
	V 18 45° (PR-2B) ³⁾	574506	
	V 22 45° (PR-2B) ³⁾	574508	
	V 28 45° (PR-2B) ³⁾	574510	
	V 35 45° (PR-2B) ³⁾	574512	
	LK Systems LK >B<Press Elförzinkat	V 12	570107
		V 15	570115
		V 18	570125
V 22		570135	
V 28		570145	
V 35		570155	
V 42		570165	
V 54		570175	
V 12 45° (PR-2B) ³⁾		574502	
V 15 45° (PR-2B) ³⁾		574504	
V 18 45° (PR-2B) ³⁾		574506	
V 22 45° (PR-2B) ³⁾		574508	
V 28 45° (PR-2B) ³⁾		574510	
V 35 45° (PR-2B) ³⁾		574512	
LK Systems LK >B<Press Gas		V 15	570115
		V 18	570125
		V 22	570135
	V 28	570145	
	V 35	570155	
	V 42	570165	
	V 54	570175	
	V 15 45° (PR-2B) ³⁾	574504	
	V 18 45° (PR-2B) ³⁾	574506	
	V 22 45° (PR-2B) ³⁾	574508	
	V 28 45° (PR-2B) ³⁾	574510	
	V 35 45° (PR-2B) ³⁾	574512	
	LK Systems LK Universal	TH 16*	570460
		TH 20*	570470
		TH 25*	570495
		TH 32	570480
		TH 40	570485
TH 50 (S)		572400	
TH 63 (S)		572405	
LVI-DAHL Altech-Alupex		U 16*	570765
		U 20*	570775
		U 25*	570780
	U 32	570785	
	MAINCOR MAINPRESS	U 16*	570765
U 20*		570775	
U 25*		570780	
U 32		570785	
MAINCOR MAINFLOR	U 16*	570765	
	U 20*	570775	
	M 15	570110	
	M 18 ¹⁾	570120	
	M 22	570130	
	M 28 ¹⁾	570140	
	M 35	570150	
Mair Heiztechnik Gomafix Cu/E	M 12	570100	
	M 15	570110	
	M 18 ¹⁾	570120	
	M 22	570130	
	M 12 45° (PR-2B) ³⁾	574520	
Mair Heiztechnik Gomafix M	H 11,5*	570315	
	H 14*	570310	
	H 16*	570320	
	H 20*	570350	
	Mair Heiztechnik M-Press	H 11,5*	570315
H 14*		570310	
H 16*		570320	
H 20*		570350	
H 26*		570370	
H 32		570380	
U 40		570790	

System	Pressing contour	Art.-No.	
Ma.s.ter System PRESSMASTER	TH 14*	570455	
	TH 16*	570460	
	TH 18*	570465	
	TH 20*	570470	
	TH 25*	570495	
	TH 26*	570475	
	TH 32	570480	
	TH 40	570485	
	TH 50 (S)	572400	
	TH 63 (S)	572405	
	H 14*	570310	
	H 16*	570320	
	H 18*	570340	
	H 20*	570350	
	H 26*	570370	
	H 32	570380	
	H 40 (4G)	570390	
	U 14*	570760	
	U 16*	570765	
	U 18*	570770	
	U 20*	570775	
	U 25*	570780	
	U 32	570785	
	U 40	570790	
	U 50	570795	
	U 63 (PR-3B) ³⁾ U 63 (S)	572837	
	MEGARO HAKAPRESS	H 11,5*	570315
		H 14*	570310
		H 16*	570320
H 17*		570330	
H 18*		570340	
H 20*		570350	
H 26*		570370	
H 32		570380	
H 40 (4G)		570390	
U 40		570790	
MEGARO MEGAPRESS	F 63 (S)	572385	
	B 16*	570850	
	B 20*	570860	
	B 26	570870	
	B 32	570880	
	Fz 40	570742	
	F 63 (S)	572385	
MEGARO MEGAPRESS MP	B 16*	570850	
	B 20*	570860	
	B 26	570870	
	B 32	570880	
	F 16*	570715	
	F 20*	570725	
	F 26*	570730	
	F 32	570735	
	Fz 40	570742	
	F 63 (S)	572385	
MEGARO MEGAPRESS MPL	H 16*	570320	
	H 20*	570350	
	H 26*	570370	
	H 32	570380	
	TH 16*	570460	
	TH 20*	570470	
	TH 26*	570475	
	TH 32	570480	
	U 16*	570765	
	U 20*	570775	
MEGARO MEGAPRESS MPL	B 16*	570850	
	B 20*	570860	
	B 26	570870	
	B 32	570880	
	F 16*	570715	
	F 20*	570725	
	F 26*	570730	
	F 32	570735	
	Fz 40	570742	
	F 63 (S)	572385	

Pressfitting systems for gas installations must only be pressed with pressing tongs/pressing rings which are highlighted in yellow. Observe the national regulations.

* These pressing tongs also fit the manual radial press REMS Eco-Press. Observe the national regulations.

- 1) Only pressing tongs from designation "108" (1st quarter of 2008), "208" (2nd quarter of 2008) etc. can be used. The designation is stamped on every pressing jaw.
- 2) For this pressfitting system producing a pressing joint with manual radial presses is not permitted.
- 3) Adapter tongs are required for driving pressing rings (PR), see page 170.
- 4) Press fittings made of red bronze (ProPress XL) must be pressed with pressing rings with press contour VUSR, copper fittings (ProPress XL-C) and stainless steel fittings (ProPress XL-S) with pressing rings with press contour VUSF.
- 5) For taking suitable pressing inserts.
- 6) Press fittings made of red bronze (Sanpress XL) must be pressed with pressing rings with press contour VR, copper fittings (Profipress XL, Profipress G XL), carbon steel (Prestabo XL) and stainless steel fittings (Sanpress Inox XL, Sanpress Inox G XL) with pressing rings with press contour VF.
- 7) Driven by REMS Power-Press XL.

The suitability of REMS pressing tools for pressfitting systems: Date 14.10.2016. For the updated situation regarding suitability status check our website: www.rems.de → Downloads → Product catalogues, brochures → REMS Catalogue.

Pressing tongs/pressing rings for additional pressfitting systems on request.

REMS pressing tongs

REMS pressing rings

Accessories for REMS radial presses (except for REMS Mini-Press ACC, REMS Mini-Press 22 V ACC) and suitable radial presses of other makes

System	Pressing contour	Art.-No.	
METALGRUP PexGrup	RFz 16*	571325	
	RFz 20*	571330	
	RFz 25	571335	
	RFz 32	571340	
METALGRUP MultiGrup	U 16*	570765	
	U 18*	570770	
	U 20*	570775	
	U 25*	570780	
	U 32	570785	
MULTITHERM PRESSSYSTEM	TH 16*	570460	
	TH 20*	570470	
	TH 26*	570475	
	TH 32	570480	
	TH 40	570485	
	TH 50 (S)	572400	
	TH 63 (S)	572405	
	TH 75 (PR-3B) ³⁾	572829	
	Multicapac Industrial AIS PEX	RFz 16*	571325
		RFz 20*	571330
RFz 25		571335	
RFz 32		571340	
U 16*		570765	
U 20*		570775	
U 25*		570780	
U 32		570785	
Multicapac Industrial multitubo systems MC		U 16*	570765
		U 18*	570770
	U 20*	570775	
	U 25*	570780	
	U 32	570785	
	U 40	570790	
	U 50	570795	
	U 63 (S)	572365	
	U 63 (PR-3B) ³⁾	572837	
	U 75 (PR-3B) ³⁾	572828	
Multicapac Industrial multitubo systems MM	H 16*	570320	
	H 20*	570350	
	H 25*	570360	
	H 26*	570370	
	H 32	570380	
	RFz 16*	571325	
	RFz 20*	571330	
	RFz 25	571335	
	RFz 32	571340	
	TH 16*	570460	
Multi-Flex ACR	U 16*	570765	
	U 18*	570770	
	U 20*	570775	
	U 25*	570780	
	U 32 (1 1/8")	570785	
	U 16* (1/2")	570765	
	U 20* (3/4")	570775	
	U 25* (1/2")	570780	
	U 32 (1 1/8")	570785	
	U 16* (1/2")	570765	
	U 20* (3/4")	570775	
	U 25* (1/2")	570780	
Multi-Flex Gas	U 16* (1/2")	570765	
	U 20* (3/4")	570775	
	U 25* (1/2")	570780	
	U 32 (1")	570785	
	U 40 (1 1/4")	570790	
	U 50 (1 1/2")	570795	
	U 63 (PR-3B) ³⁾ (2")	572837	
	U 75 (PR-3B) ³⁾ (2 1/2")	572828	
Multi-Flex Water	U 16* (1/2")	570765	
	U 25* (3/4")	570780	
	U 32 (1")	570785	
	U 40 (1 1/4")	570790	
	U 50 (1 1/2")	570795	
	U 63 (PR-3B) ³⁾ (2")	572837	
	U 63 (S) (2")	572365	
	U 75 (PR-3B) ³⁾ (2 1/2")	572828	
NEUTHERM MEKUPRESS-HT	H 16*	570320	
	H 20*	570350	
	H 26*	570370	
	H 32	570380	
	H 40 (4G)	570390	
	U 40	570790	
	NIBCO (USA) Press System Copper	VUS 1/2" (OD 15,9mm)	571770
VUS 3/4" (OD 22,2mm)		571775	
VUS 1" (OD 28,6mm)		571780	
VUS 1 1/4" (OD 34,9mm)		571785	
VUS 1 1/2" (OD 41,3mm)		571790	
VUS 2" (OD 54,0mm)		571795	
Nicol Fluxo	TH 16*	570460	
	TH 20*	570470	
	TH 26*	570475	
	TH 32	570480	
	TH 40	570485	
	TH 50 (S)	572400	
	TH 63 (S)	572405	
	TH 75 (PR-3B) ³⁾	572829	

System	Pressing contour	Art.-No.	
NUPIGECO Multinupi	U 14*	570760	
	U 16*	570765	
	U 18*	570770	
	U 20*	570775	
	C 26*	570750	
	U 32	570785	
	U 40	570790	
	U 50	570795	
	U 63 (PR-3B) ³⁾	572837	
	U 63 (S)	572365	
	NUPIGECO Multipinza	B 16*	570850
		B 18*	570855
B 20*		570860	
B 26		570870	
B 32		570880	
F 16*		570715	
F 18*		570720	
F 20*		570725	
F 25*		570730	
F 32		570735	
H 16*		570320	
Nussbaum Optiflex-Flowpress	VRX 16	571750	
	VRX 20	571752	
	VRX 25	571754	
	VRX 32	571756	
	VRX 40	571758	
	Nussbaum Optiflex Press	VP 16*	570910
		VP 20*	570915
		VP 25*	570920
		VP 32	570925
	Nussbaum Optipress	V 15	570115
		V 18	570125
Aquaplus	V 22	570135	
	V 28	570145	
	V 35	570155	
	V 42	570165	
	V 54	570175	
	VF 64,0 (PR-3B) ³⁾	572815	
	VF 76,1 (PR-3B) ³⁾	572816	
	VF 88,9 (PR-3B) ³⁾	572817	
	VF 108,0 (PR-3B) ³⁾	572818	
	V 15 45° (PR-2B) ³⁾	574504	
	V 18 45° (PR-2B) ³⁾	574506	
	V 22 45° (PR-2B) ³⁾	574508	
	V 28 45° (PR-2B) ³⁾	574510	
	V 35 45° (PR-2B) ³⁾	574512	
	Nussbaum Optipress-Gaz	V 15	570115
		V 18	570125
V 22		570135	
V 28		570145	
V 35		570155	
V 42		570165	
V 54		570175	
VF 64,0 (PR-3B) ³⁾		572815	
VF 76,1 (PR-3B) ³⁾		572816	
VF 88,9 (PR-3B) ³⁾		572817	
VF 108,0 (PR-3B) ³⁾		572818	
V 15 45° (PR-2B) ³⁾		574504	
V 18 45° (PR-2B) ³⁾		574506	
V 22 45° (PR-2B) ³⁾		574508	
V 28 45° (PR-2B) ³⁾		574510	
V 35 45° (PR-2B) ³⁾		574512	
Nussbaum Optipress-Therm	V 15	570115	
	V 18	570125	
	V 22	570135	
	V 28	570145	
	V 35	570155	
	V 42	570165	
	V 54	570175	
	VF 64,0 (PR-3B) ³⁾	572815	
	VF 76,1 (PR-3B) ³⁾	572816	
	VF 88,9 (PR-3B) ³⁾	572817	
	VF 108,0 (PR-3B) ³⁾	572818	
	V 15 45° (PR-2B) ³⁾	574504	
	V 18 45° (PR-2B) ³⁾	574506	
	V 22 45° (PR-2B) ³⁾	574508	
	V 28 45° (PR-2B) ³⁾	574510	
	V 35 45° (PR-2B) ³⁾	574512	

System	Pressing contour	Art.-No.
O.M.T. - Press	TH 16*	570460
	TH 20*	570470
	TH 26*	570475
	TH 32	570480
	TH 40	570485
PBTub SERTIPRESS	RFz 12*	571320
	RFz 16*	571325
	RFz 20*	571330
PBTub SERTI-STEEL	RFz 25	571335
	M 15	570110
	M 18	570120
	M 22	570130
	M 28	570140
	M 35	570150
	M 42 (PR-3S) ³⁾	572706
	M 54 (PR-3S) ³⁾	572708
	M 15 45° (PR-2B) ³⁾	574522
	M 18 45° (PR-2B) ³⁾	574524
Pegler Yorkshire Henco Multilayer Solutions	M 22 45° (PR-2B) ³⁾	574526
	M 28 45° (PR-2B) ³⁾	574528
	M 35 45° (PR-2B) ³⁾	574530
	TH 14*	570455
	TH 16*	570460
Pegler Yorkshire XPress Carbon	TH 18*	570465
	TH 20*	570470
	TH 26*	570475
	HE 32	571900
	HE 40	571902
	M 12	570100
	M 15	570110
	M 18 ¹⁾	570120
Pegler Yorkshire XPress Copper	M 22	570130
	M 28 ¹⁾	570140
	M 35	570150
	M 42 (PR-3S) ³⁾	572706
	M 54 (PR-3S) ³⁾	572708
	M 12 45° (PR-2B) ³⁾	574520
	M 15 45° (PR-2B) ³⁾	574522
	M 18 45° (PR-2B) ³⁾	574524
	M 22 45° (PR-2B) ³⁾	574526
	M 28 45° (PR-2B) ³⁾	574528
	M 35 45° (PR-2B) ³⁾	574530
	M 12	570100
	M 15	570110
	M 18 ¹⁾	570120
	M 22	570130
Pegler Yorkshire XPress Copper Gas	M 28 ¹⁾	570140
	M 35	570150
	M 42 (PR-3S) ³⁾	572706
	M 54 (PR-3S) ³⁾	572708
	M 15	570110
	M 18 ¹⁾	570120
	M 22	570130
	M 28 ¹⁾	570140
	M 35	570150
	M 42 (PR-3S) ³⁾	572706
	M 54 (PR-3S) ³⁾	572708
Pegler Yorkshire XPress Solar	M 15	570110
	M 18 ¹⁾	570120
	M 22	570130
	M 28 ¹⁾	570140
	M 35	570150
	M 42 (PR-3S) ³⁾	572706
	M 54 (PR-3S) ³⁾	572708
	M 15 45° (PR-2B) ³⁾	574522
	M 18 45° (PR-2B) ³⁾	574524
	M 22 45° (PR-2B) ³⁾	574526
	M 28 45° (PR-2B) ³⁾	574528
Pegler Yorkshire XPress Stainless	M 35 45° (PR-2B) ³⁾	574530
	M 15	570110
	M 18 ¹⁾	570120
	M 22	570130
	M 28 ¹⁾	570140
	M 35	570150
	M 42 (PR-3S) ³⁾	572706
	M 54 (PR-3S) ³⁾	572708
	M 15 45° (PR-2B) ³⁾	574522
	M 18 45° (PR-2B) ³⁾	574524
	M 22 45° (PR-2B) ³⁾	574526

REMS pressing tongs REMS pressing rings

Accessories for REMS radial presses (except for REMS Mini-Press ACC, REMS Mini-Press 22 V ACC) and suitable radial presses of other makes

System	Pressing contour	Art.-No.
Pegler Yorkshire	M 15	570110
XPress Stainless	M 18 ¹⁾	570120
Gas	M 22	570130
	M 28 ¹⁾	570140
	M 35	570150
	M 42 (PR-3S) ³⁾	572706
	M 54 (PR-3S) ³⁾	572708
	M 15 45° (PR-2B) ³⁾	574522
	M 18 45° (PR-2B) ³⁾	574524
	M 22 45° (PR-2B) ³⁾	574526
	M 28 45° (PR-2B) ³⁾	574528
	M 35 45° (PR-2B) ³⁾	574530
PERFEXIM	U 16*	570765
"PERFEKT SYSTEM"	U 20*	570775
	U 25*	570780
	U 32	570785
PERFILTUBO	U 16*	570765
PERFILALUPEX	U 18*	570770
	U 20*	570775
	U 25*	570780
	U 32	570785
	U 40	570790
	U 50	570795
	U 63 (PR-3B) ³⁾	572837
	U 63 (S)	572365
	U 75 (PR-3B) ³⁾	572828
PERFILTUBO	M 15	570110
PERFILPRESS	M 18	570120
	M 22	570130
	M 28	570140
	M 35	570150
	M 42 (4G)	570160
	M 54 (4G)	570170
	M 42 (PR-3S) ³⁾	572706
	M 54 (PR-3S) ³⁾	572708
	M 76,1 XL (PR-3S) ³⁾⁷⁾	579101
	M 88,9 XL (PR-3S) ³⁾⁷⁾	579102
	M 108,0 XL (PR-3S) ³⁾⁷⁾	579103
	M 15 45° (PR-2B) ³⁾	574522
	M 18 45° (PR-2B) ³⁾	574524
	M 22 45° (PR-2B) ³⁾	574526
	M 28 45° (PR-2B) ³⁾	574528
	M 35 45° (PR-2B) ³⁾	574530
PEXTUBE	RFz 16*	571325
PexTube	RFz 20*	571330
	RFz 25	571337
	RFz 32	571342
Pipelife	M 15	570110
C-PRESS	M 18	570120
	M 22	570130
	M 28	570140
	M 35	570150
	M 42 (PR-3S) ³⁾	572706
	M 54 (PR-3S) ³⁾	572708
	M 76,1 XL (PR-3S) ³⁾⁷⁾	579101
	M 88,9 XL (PR-3S) ³⁾⁷⁾	579102
	M 108,0 XL (PR-3S) ³⁾⁷⁾	579103
	M 15 45° (PR-2B) ³⁾	574522
	M 18 45° (PR-2B) ³⁾	574524
	M 22 45° (PR-2B) ³⁾	574526
	M 28 45° (PR-2B) ³⁾	574528
	M 35 45° (PR-2B) ³⁾	574530

System	Pressing contour	Art.-No.
Pipelife	TH 16*	570460
RADOPRESS	TH 18*	570465
	TH 20*	570470
	TH 26*	570475
	TH 32	570480
	TH 40	570485
	TH 50 (S)	572400
	TH 63 (S)	572405
Pipetec Connect	TH 16*	570460
	TH 20*	570470
	TH 26*	570475
	TH 32	570480
	TH 40	570485
	TH 50 (S)	572400
	TH 63 (S)	572405
PLASTICA ALFA	TH 16*	570460
Multiplex	TH 20*	570470
	TH 26*	570475
	TH 32	570480
PLASTICA ALFA	TH 16*	570460
Multipexalfa Gas	TH 20*	570470
	TH 26*	570475
PLASTICA ALFA	TH 16*	570460
Multipexalfa Gas protek	TH 20*	570470
	TH 26*	570475
PLASTICA ALFA	TH 16*	570460
Multipex Air	TH 20*	570470
	TH 26*	570475
	TH 32	570480
PLASTICA ALFA	TH 16*	570460
Multipex Plus	TH 20*	570470
	TH 26*	570475
	TH 32	570480
PLASTICA ALFA	TH 16*	570460
Multipex Thermo	TH 20*	570470
	TH 26*	570475
	TH 32	570480
PLASTICA ALFA	TH 16*	570460
Multipex Thermo Plus	TH 20*	570470
	TH 26*	570475
	TH 32	570480
PLÁSTICOS	U 16*	570765
FERRO	U 20*	570775
FERROPLAST	U 25*	570780
GPF MC PRESS	U 32	570785
Pressfitting MULTICAPA		
PLÁSTICOS	U 16*	570765
FERRO	U 20*	570775
FERROPLAST	U 25*	570780
GPF PPSU	U 32	570785
Pressfitting PE-X y MULTICAPA		
PLÁSTICOS	RFz 16*	571325
FERRO	RFz 20*	571330
FERROPLAST	RFz 25	571335
GPF PRESS	RFz 32	571340
Pressfitting PE-X		
PLUMBING PLUS	K16/P18*	572600
EziPex Crimp (AUS)	K/20*	572605
	K/25*	572610
	K32	572615
	K1/40	572620
	K1/50	572625
PLUMBING PLUS	K16/P18*	572600
EziPex Gas (AUS)	K/20*	572605
	K/25*	572610
	K32	572615
	K1/40	572620
	K1/50	572625
PLUMBING PLUS	VAU 15 (OD 12,7mm)	572687
EziPress Gas (AUS)	VAU 20 (OD 19,1mm)	572689
	VAU 25 (OD 25,4mm)	572691
	VAU 32 (OD 31,8mm)	572693
	VAU 40 (OD 38,1mm)	572695
	VAU 50 (OD 50,8mm)	572697
	VAUF 65 (PR-3B) ³⁾ (OD 63,5mm)	572839
	VAUF 80 (PR-3B) ³⁾ (OD 76,2mm)	572840
	VAUF 100 (PR-3B) ³⁾ (OD 101,6mm)	572841

System	Pressing contour	Art.-No.
PLUMBING PLUS	VAU 15 (OD 12,7mm)	572687
EziPress Solar (AUS)	VAU 20 (OD 19,1mm)	572689
	VAU 25 (OD 25,4mm)	572691
PLUMBING PLUS	VAU 15 (OD 12,7mm)	572687
EziPress Water (AUS)	VAU 20 (OD 19,1mm)	572689
	VAU 25 (OD 25,4mm)	572691
	VAU 32 (OD 31,8mm)	572693
	VAU 40 (OD 38,1mm)	572695
	VAU 50 (OD 50,8mm)	572697
	VAUF 65 (PR-3B) ³⁾ (OD 63,5mm)	572839
	VAUF 80 (PR-3B) ³⁾ (OD 76,2mm)	572840
	VAUF 100 (PR-3B) ³⁾ (OD 101,6mm)	572841
POLYPIPE	TH 10*	570467
POLYSURE	TH 15*	570457
	TH 22*	570472
	TH 28	570477
POLYSAN	M 15	570110
Handelsges.	M 18	570120
m.b.H. & Co KG (Krems/Österreich)	M 22	570130
	M 28	570140
	M 35	570150
POLYSAN-	M 42 (PR-3S) ³⁾	572706
C-Stahl-Press-System M	M 54 (PR-3S) ³⁾	572708
	M 15 45° (PR-2B) ³⁾	574522
	M 18 45° (PR-2B) ³⁾	574524
	M 22 45° (PR-2B) ³⁾	574526
	M 28 45° (PR-2B) ³⁾	574528
	M 35 45° (PR-2B) ³⁾	574530
POLYSAN	V 15	570115
Handelsges.	V 18	570125
m.b.H. & Co KG (Krems/Österreich)	V 22	570135
	V 28	570145
	V 35	570155
POLYSAN-	V 42	570165
C-Stahl-Press-System V	V 54	570175
	V 15 45° (PR-2B) ³⁾	574504
	V 18 45° (PR-2B) ³⁾	574506
	V 22 45° (PR-2B) ³⁾	574508
	V 28 45° (PR-2B) ³⁾	574510
	V 35 45° (PR-2B) ³⁾	574512
POLYSAN	M 15	570110
Handelsges.	M 18	570120
m.b.H. & Co KG (Krems/Österreich)	M 22	570130
	M 28	570140
	M 35	570150
POLYSAN-	M 42 (PR-3S) ³⁾	572706
Edelstahl	M 54 (PR-3S) ³⁾	572708
Press-System Gas	M 15 45° (PR-2B) ³⁾	574522
	M 18 45° (PR-2B) ³⁾	574524
	M 22 45° (PR-2B) ³⁾	574526
	M 28 45° (PR-2B) ³⁾	574528
	M 35 45° (PR-2B) ³⁾	574530
POLYSAN	M 15	570110
Handelsges.	M 18	570120
m.b.H. & Co KG (Krems/Österreich)	M 22	570130
	M 28	570140
	M 35	570150
POLYSAN-	M 42 (PR-3S) ³⁾	572706
Edelstahl	M 54 (PR-3S) ³⁾	572708
Press-System Wasser	M 15 45° (PR-2B) ³⁾	574522
	M 18 45° (PR-2B) ³⁾	574524
	M 22 45° (PR-2B) ³⁾	574526
	M 28 45° (PR-2B) ³⁾	574528
	M 35 45° (PR-2B) ³⁾	574530

Pressfitting systems for gas installations must only be pressed with pressing tongs/pressing rings which are highlighted in yellow. Observe the national regulations.

* These pressing tongs also fit the manual radial press REMS Eco-Press. Observe the national regulations.

¹⁾ Only pressing tongs from designation "108" (1st quarter of 2008), "208" (2nd quarter of 2008) etc. can be used. The designation is stamped on every pressing jaw.

²⁾ For this pressfitting system producing a pressing joint with manual radial presses is not permitted.

³⁾ Adapter tongs are required for driving pressing rings (PR), see page 170.

⁴⁾ Press fittings made of red bronze (ProPress XL) must be pressed with pressing rings with press contour VUSR, copper fittings (ProPress XL-C) and stainless steel fittings (ProPress XL-S) with pressing rings with press contour VUSF.

⁵⁾ For taking suitable pressing inserts.

⁶⁾ Press fittings made of red bronze (Sanpress XL) must be pressed with pressing rings with press contour VR, copper fittings (Profipress XL, Profipress G XL), carbon steel (Prestabo XL) and stainless steel fittings (Sanpress Inox XL, Sanpress Inox G XL) with pressing rings with press contour VF.

⁷⁾ Driven by REMS Power-Press XL.

The suitability of REMS pressing tools for pressfitting systems: Date 14.10.2016. For the updated situation regarding suitability status check our website: www.rems.de → Downloads → Product catalogues, brochures → REMS Catalogue.

Pressing tongs/pressing rings for additional pressfitting systems on request.

REMS pressing tongs

REMS pressing rings

Accessories for REMS radial presses (except for REMS Mini-Press ACC, REMS Mini-Press 22 V ACC) and suitable radial presses of other makes

System	Pressing contour	Art.-No.
POLYSAN	TH 14*	570455
Handelsges.	TH 16*	570460
m.b.H. & Co KG	TH 17*	570462
(Krems/Österreich)	TH 18*	570465
	TH 20*	570470
POLYSAN-	TH 26*	570475
Press-System	TH 32	570480
	TH 40	570485
	TH 50 (S)	572400
	TH 63 (S)	572405
	TH 75 (PR-3B) ³⁾	572829
POLYSAN	TH 14*	570455
Handelsges.	TH 16*	570460
m.b.H. & Co KG	TH 17*	570462
(Krems/Österreich)	TH 18*	570465
	TH 20*	570470
POLYSAN-Henco-	TH 26*	570475
Press-System	HE 32	571900
	HE 40	571902
POLYSAN	U 16*	570765
(España)	U 18*	570770
Rainbow	U 20*	570775
	U 25*	570780
	U 32	570785
	U 40	570790
	U 50	570795
	U 63 (PR-3B) ³⁾	572837
	U 63 (S)	572365
Prandelli	H 14*	570310
Multyrama Pf	H 16*	570320
	H 18*	570340
	H 20*	570350
	H 26*	570370
	H 32	570380
	U 40	570790
	U 50	570795
	U 63 (PR-3B) ³⁾	572837
Prandelli	H 16*	570320
Multyrama Pfm	H 18*	570340
	H 20*	570350
	H 26*	570370
	H 32	570380
	TH 16*	570460
	TH 18*	570465
	TH 20*	570470
	TH 26*	570475
	TH 32	570480
	U 16*	570765
	U 18*	570770
	U 20*	570775
Raccorderie	M 15	570110
Metalliche	M 18	570120
aesPRES ¹⁾	M 22	570130
	M 28	570140
	M 35	570150
	M 42 (PR-3S) ³⁾	572706
	M 54 (PR-3S) ³⁾	572708
Raccorderie	M 15	570110
Metalliche	M 18	570120
inoxPRES ¹⁾	M 22	570130
	M 28	570140
	M 35	570150
	M 42 (PR-3S) ³⁾	572706
	M 54 (PR-3S) ³⁾	572708
Raccorderie	M 15	570110
Metalliche	M 18	570120
steelpRES ¹⁾	M 22	570130
	M 28	570140
	M 35	570150
	M 42 (PR-3S) ³⁾	572706
	M 54 (PR-3S) ³⁾	572708
RBM Tita-gas	TH 16*	570460
	TH 20*	570470
	TH 26*	570475
	TH 32	570480
RBM Tita-fix	B 14*	570845
	B 16*	570850
	B 18*	570855
	B 20*	570860
	B 26	570870
	F 16*	570715
	F 18*	570720
	F 20*	570725
	H 14*	570310
	H 16*	570320
	H 18*	570340
	H 20*	570350
	H 26*	570370
	H 32	570380
	TH 14*	570455
	TH 16*	570460
	TH 18*	570465
	TH 20*	570470
	TH 26*	570475
	TH 32	570480
	TH 40	570485
	TH 50 (S)	572400
	TH 63 (S)	572405
	U 14*	570760
	U 16*	570765
	U 18*	570770
	U 20*	570775

System	Pressing contour	Art.-No.
Redi Nicoll Fluxo	TH 14*	570455
	TH 16*	570460
	TH 18*	570465
	TH 20*	570470
	TH 26*	570475
	TH 32	570480
	TH 40	570485
	TH 50 (S)	572400
	TH 63 (S)	572405
	TH 75 (PR-3B) ³⁾	572829
Redi Nicoll Fluxo	TH 16*	570460
Gas	TH 20*	570470
	TH 26*	570475
RIFENG U	U 14*	570760
PRESS FITTING	U 16*	570765
(F5)	U 18*	570770
	U 20*	570775
	U 25*	570780
	U 32	570785
	U 40	570790
	U 50	570795
	U 63 (S)	572365
	U 63 (PR-3B) ³⁾	572837
	U 75 (PR-3B) ³⁾	572828
RIFENG TH	TH 16*	570460
PRESS FITTING	TH 20*	570470
(F9)	TH 25*	570495
	TH 26*	570475
	TH 32	570480
	TH 40	570485
	TH 50 (S)	572400
	TH 63 (S)	572405
RIQUIER	RFz 12*	571320
A SERTIR	RFz 16*	571325
	RFz 20*	571330
	RFz 25	571335
Roth	RN 14*	572672
	RN 17*	572674
	RN 20*	572676
	RN 25/26	572678
	RN 32	572680
Roth España -	TH 16*	570460
Global Plastic	TH 18*	570465
Rothapress	TH 20*	570470
	TH 25*	570495
	TH 32	570480
	TH 40	570485
	TH 50 (S)	572400
	TH 63 (S)	572405
Roth Nordic	RN 16	572670
Alu-LaserPlus/	RN 20	572676
PressCheck ²⁾	RN 25/26	572678
(DNK-NOR-SWE-FIN)	RN 32	572680
Rubinetterie	M 15	570110
Bresciane	M 18	570120
Bonomi	M 22	570130
TURBO INOX	M 28	570140
	M 35	570150
	M 42 (PR-3S) ³⁾	572706
	M 54 (PR-3S) ³⁾	572708
	M 76,1 XL (PR-3S) ³⁾⁷⁾	579101
	M 88,9 XL (PR-3S) ³⁾⁷⁾	579102
	M 108,0 XL (PR-3S) ³⁾⁷⁾	579103
	M 15 45° (PR-2B) ³⁾	574522
	M 18 45° (PR-2B) ³⁾	574524
	M 22 45° (PR-2B) ³⁾	574526
	M 28 45° (PR-2B) ³⁾	574528
	M 35 45° (PR-2B) ³⁾	574530
Rubinetterie	M 15	570110
Bresciane	M 18	570120
Bonomi	M 22	570130
TURBO INOX GASM	28	570140
	M 35	570150
	M 42 (PR-3S) ³⁾	572706
	M 54 (PR-3S) ³⁾	572708
	M 15 45° (PR-2B) ³⁾	574522
	M 18 45° (PR-2B) ³⁾	574524
	M 22 45° (PR-2B) ³⁾	574526
	M 28 45° (PR-2B) ³⁾	574528
	M 35 45° (PR-2B) ³⁾	574530

System	Pressing contour	Art.-No.
Rubinetterie	M 15	570110
Bresciane	M 18	570120
Bonomi	M 22	570130
TURBO STEEL	M 28	570140
	M 35	570150
	M 42 (PR-3S) ³⁾	572706
	M 54 (PR-3S) ³⁾	572708
	M 76,1 XL (PR-3S) ³⁾⁷⁾	579101
	M 88,9 XL (PR-3S) ³⁾⁷⁾	579102
	M 108,0 XL (PR-3S) ³⁾⁷⁾	579103
	M 15 45° (PR-2B) ³⁾	574522
	M 18 45° (PR-2B) ³⁾	574524
	M 22 45° (PR-2B) ³⁾	574526
	M 28 45° (PR-2B) ³⁾	574528
	M 35 45° (PR-2B) ³⁾	574530
Rubinetterie	TH 14*	570455
Bresciane	TH 16*	570460
Bonomi	TH 18*	570465
TURBO PRESS	TH 20*	570470
	TH 26*	570475
	TH 32	570480
	TH 40	570485
	TH 50 (S)	572400
	TH 63 (S)	572405
Rubinetterie	TH 16*	570460
Bresciane	TH 20*	570470
Bonomi	TH 26*	570475
TURBO PRESS	TH 32	570480
GAS		
Sa.MI plastic	TH 14*	570455
	TH 16*	570460
	TH 18*	570465
	TH 20*	570470
	TH 26*	570475
	TH 32	570480
	TH 40	570485
	TH 50 (S)	572400
	TH 63 (S)	572405
Sa.MI plastic	TH 16*	570460
Multistrato Gas	TH 20*	570470
	TH 26*	570475
	TH 32	570480
SANHA	B 16*	570850
3fit-Press Pb-free	B 20*	570860
Serie 25000	B 26	570870
	B 32	570880
	F 16*	570717
	F 20*	570727
	F 26*	570730
	F 32	570735
	Fz 40	570742
	Fz 50	570747
	F 63 (S)	572385
	H 16*	570320
	H 20*	570350
	H 26*	570370
	H 32	570380
	H 40 (4G)	570390
	TH 16*	570460
	TH 20*	570470
	TH 26*	570475
	TH 32	570480
	TH 40	570485
	TH 50 (S)	572400
	TH 63 (S)	572405
	U 16*	570765
	U 20*	570775
	C 26*	570750
	U 32	570785
	U 40	570790
	U 50	570795
	U 63 (PR-3B) ³⁾	572837
	U 63 (S)	572365
SANHA	B 16*	570850
3fit-Press PPSU	B 20*	570860
Serie 35000	B 26	570870
	B 32	570880
	F 16*	570717
	F 20*	570727
	F 26*	570730
	F 32	570735
	H 16*	570320
	H 20*	570350
	H 26*	570370
	H 32	570380
	TH 16*	570460
	TH 20*	570470
	TH 26*	570475
	TH 32	570480
	TH 40	570485
	TH 50 (S)	572400
	TH 63 (S)	572405
	U 16*	570765
	U 20*	570775
	C 26*	570750
	U 32	570785

REMS pressing tongs REMS pressing rings

Accessories for REMS radial presses (except for REMS Mini-Press ACC, REMS Mini-Press 22 V ACC) and suitable radial presses of other makes

System	Pressing contour	Art.-No.
SANHA-NiroSan Gas Presssystem Serie 17000	SA 15	570935
	SA 18	570940
	SA 22	570945
	SA 28	570950
	SA 35	570955
	M 15	570110
	M 18	570120
	M 22	570130
	M 28	570140
	M 35	570150
	M 42 (PR-3S) ³⁾	572706
	M 54 (PR-3S) ³⁾	572708
	M 76,1 XL (PR-3S) ³⁾⁷⁾	579101
	M 88,9 XL (PR-3S) ³⁾⁷⁾	579102
	M 108,0 XL (PR-3S) ³⁾⁷⁾	579103
	M 15 45° (PR-2B) ³⁾	574522
	M 18 45° (PR-2B) ³⁾	574524
	M 22 45° (PR-2B) ³⁾	574526
	M 28 45° (PR-2B) ³⁾	574528
	M 35 45° (PR-2B) ³⁾	574530
	V 15	570115
	V 18	570125
	V 22	570135
	V 28	570145
	V 35	570155
	V 42	570165
	V 54	570175
	V 15 45° (PR-2B) ³⁾	574504
	V 18 45° (PR-2B) ³⁾	574506
	V 22 45° (PR-2B) ³⁾	574508
	V 28 45° (PR-2B) ³⁾	574510
V 35 45° (PR-2B) ³⁾	574512	
SANHA-NiroSan Industry Presssystem Serie 18000	SA 15	570935
	SA 18	570940
	SA 22	570945
	SA 28	570950
	SA 35	570955
	M 15	570110
	M 18	570120
	M 22	570130
	M 28	570140
	M 35	570150
	M 42 (PR-3S) ³⁾	572706
	M 54 (PR-3S) ³⁾	572708
	XP 64,0 XL (PR-3S) ³⁾⁷⁾	579100
	M 76,1 XL (PR-3S) ³⁾⁷⁾	579101
	M 88,9 XL (PR-3S) ³⁾⁷⁾	579102
	M 108,0 XL (PR-3S) ³⁾⁷⁾	579103
	M 15 45° (PR-2B) ³⁾	574522
	M 18 45° (PR-2B) ³⁾	574524
	M 22 45° (PR-2B) ³⁾	574526
	M 28 45° (PR-2B) ³⁾	574528
	M 35 45° (PR-2B) ³⁾	574530
	V 15	570115
	V 18	570125
	V 22	570135
	V 28	570145
	V 35	570155
V 42	570165	
V 54	570175	
V 15 45° (PR-2B) ³⁾	574504	
V 18 45° (PR-2B) ³⁾	574506	
V 22 45° (PR-2B) ³⁾	574508	
V 28 45° (PR-2B) ³⁾	574510	
V 35 45° (PR-2B) ³⁾	574512	

System	Pressing contour	Art.-No.
SANHA-NiroSan- Presssystem Serie 9000	SA 15	570935
	SA 18	570940
	SA 22	570945
	SA 28	570950
	SA 35	570955
	M 15	570110
	M 18	570120
	M 22	570130
	M 28	570140
	M 35	570150
	M 42 (PR-3S) ³⁾	572706
	M 54 (PR-3S) ³⁾	572708
	XP 64,0 XL (PR-3S) ³⁾⁷⁾	579100
	M 76,1 XL (PR-3S) ³⁾⁷⁾	579101
	M 88,9 XL (PR-3S) ³⁾⁷⁾	579102
	M 108,0 XL (PR-3S) ³⁾⁷⁾	579103
	M 15 45° (PR-2B) ³⁾	574522
	M 18 45° (PR-2B) ³⁾	574524
	M 22 45° (PR-2B) ³⁾	574526
	M 28 45° (PR-2B) ³⁾	574528
	M 35 45° (PR-2B) ³⁾	574530
	V 15	570115
	V 18	570125
	V 22	570135
	V 28	570145
	V 35	570155
V 42	570165	
V 54	570175	
V 15 45° (PR-2B) ³⁾	574504	
V 18 45° (PR-2B) ³⁾	574506	
V 22 45° (PR-2B) ³⁾	574508	
V 28 45° (PR-2B) ³⁾	574510	
V 35 45° (PR-2B) ³⁾	574512	
SANHA-NiroSan SF Presssystem Serie 19000 (silicone free)	SA 15	570935
	SA 18	570940
	SA 22	570945
	SA 28	570950
	SA 35	570955
	M 15	570110
	M 18	570120
	M 22	570130
	M 28	570140
	M 35	570150
	M 42 (PR-3S) ³⁾	572706
	M 54 (PR-3S) ³⁾	572708
	M 76,1 XL (PR-3S) ³⁾⁷⁾	579101
	M 88,9 XL (PR-3S) ³⁾⁷⁾	579102
	M 108,0 XL (PR-3S) ³⁾⁷⁾	579103
	M 15 45° (PR-2B) ³⁾	574522
	M 18 45° (PR-2B) ³⁾	574524
	M 22 45° (PR-2B) ³⁾	574526
	M 28 45° (PR-2B) ³⁾	574528
	M 35 45° (PR-2B) ³⁾	574530
	V 15	570115
	V 18	570125
	V 22	570135
	V 28	570145
	V 35	570155
	V 42	570165
V 54	570175	
V 15 45° (PR-2B) ³⁾	574504	
V 18 45° (PR-2B) ³⁾	574506	
V 22 45° (PR-2B) ³⁾	574508	
V 28 45° (PR-2B) ³⁾	574510	
V 35 45° (PR-2B) ³⁾	574512	

System	Pressing contour	Art.-No.
SANHA NiroTherm Industry Serie 91000	SA 15	570935
	SA 18	570940
	SA 22	570945
	SA 28	570950
	SA 35	570955
	M 15	570110
	M 18	570120
	M 22	570130
	M 28	570140
	M 35	570150
	M 42 (PR-3S) ³⁾	572706
	M 54 (PR-3S) ³⁾	572708
	M 76,1 XL (PR-3S) ³⁾⁷⁾	579101
	M 88,9 XL (PR-3S) ³⁾⁷⁾	579102
	M 108,0 XL (PR-3S) ³⁾⁷⁾	579103
	M 15 45° (PR-2B) ³⁾	574522
	M 18 45° (PR-2B) ³⁾	574524
	M 22 45° (PR-2B) ³⁾	574526
	M 28 45° (PR-2B) ³⁾	574528
	M 35 45° (PR-2B) ³⁾	574530
	V 15	570115
	V 18	570125
	V 22	570135
	V 28	570145
	V 35	570155
	V 42	570165
V 54	570175	
V 15 45° (PR-2B) ³⁾	574504	
V 18 45° (PR-2B) ³⁾	574506	
V 22 45° (PR-2B) ³⁾	574508	
V 28 45° (PR-2B) ³⁾	574510	
V 35 45° (PR-2B) ³⁾	574512	
SANHA NiroTherm Industry Serie 98000	SA 15	570935
	SA 18	570940
	SA 22	570945
	SA 28	570950
	SA 35	570955
	M 15	570110
	M 18	570120
	M 22	570130
	M 28	570140
	M 35	570150
	M 42 (PR-3S) ³⁾	572706
	M 54 (PR-3S) ³⁾	572708
	M 76,1 XL (PR-3S) ³⁾⁷⁾	579101
	M 88,9 XL (PR-3S) ³⁾⁷⁾	579102
	M 108,0 XL (PR-3S) ³⁾⁷⁾	579103
	M 15 45° (PR-2B) ³⁾	574522
	M 18 45° (PR-2B) ³⁾	574524
	M 22 45° (PR-2B) ³⁾	574526
	M 28 45° (PR-2B) ³⁾	574528
	M 35 45° (PR-2B) ³⁾	574530
	V 15	570115
	V 18	570125
	V 22	570135
	V 28	570145
	V 35	570155
	V 42	570165
V 54	570175	
V 15 45° (PR-2B) ³⁾	574504	
V 18 45° (PR-2B) ³⁾	574506	
V 22 45° (PR-2B) ³⁾	574508	
V 28 45° (PR-2B) ³⁾	574510	
V 35 45° (PR-2B) ³⁾	574512	

Pressfitting systems for gas installations must only be pressed with pressing tongs/pressing rings which are highlighted in yellow. Observe the national regulations.

* These pressing tongs also fit the manual radial press REMS Eco-Press. Observe the national regulations.

- 1) Only pressing tongs from designation "108" (1st quarter of 2008), "208" (2nd quarter of 2008) etc. can be used. The designation is stamped on every pressing jaw.
- 2) For this pressfitting system producing a pressing joint with manual radial presses is not permitted.
- 3) Adapter tongs are required for driving pressing rings (PR), see page 170.
- 4) Press fittings made of red bronze (ProPress XL) must be pressed with pressing rings with press contour VUSR, copper fittings (ProPress XL-C) and stainless steel fittings (ProPress XL-S) with pressing rings with press contour VUSF.
- 5) For taking suitable pressing inserts.
- 6) Press fittings made of red bronze (Sanpress XL) must be pressed with pressing rings with press contour VR, copper fittings (Profipress XL, Profipress G XL), carbon steel (Prestabo XL) and stainless steel fittings (Sanpress Inox XL, Sanpress Inox G XL) with pressing rings with press contour VF.
- 7) Driven by REMS Power-Press XL.

The suitability of REMS pressing tools for pressfitting systems: Date 14.10.2016. For the updated situation regarding suitability status check our website: www.rems.de → Downloads → Product catalogues, brochures → REMS Catalogue.

Pressing tongs/pressing rings for additional pressfitting systems on request.

System	Pressing contour	Art.-No.	
SANHA-Press Chrom Serie 16000	SA 12	570930	
	SA 15	570935	
	SA 18	570940	
	SA 22	570945	
	SA 28	570950	
	M 12	570100	
	M 15	570110	
	M 18	570120	
	M 22	570130	
	M 28	570140	
	M 12 45° (PR-2B) ³⁾	574520	
	M 15 45° (PR-2B) ³⁾	574522	
	M 18 45° (PR-2B) ³⁾	574524	
	M 22 45° (PR-2B) ³⁾	574526	
	M 28 45° (PR-2B) ³⁾	574528	
	V 12	570107	
	V 15	570115	
	V 18	570125	
	V 22	570135	
	V 28	570145	
	V 12 45° (PR-2B) ³⁾	574502	
	V 15 45° (PR-2B) ³⁾	574504	
	V 18 45° (PR-2B) ³⁾	574506	
	V 22 45° (PR-2B) ³⁾	574508	
	V 28 45° (PR-2B) ³⁾	574510	
	SANHA-Press GAS Pressfittings Serie 10000/ Serie 11000	SA 12	570930
SA 14		570932	
SA 15		570935	
SA 16		570937	
SA 18		570940	
SA 22		570945	
SA 28		570950	
SA 35		570955	
M 12		570100	
M 15		570110	
M 18		570120	
M 22		570130	
M 28		570140	
M 35		570150	
M 42 (PR-3S) ³⁾		572706	
M 54 (PR-3S) ³⁾		572708	
M 12 45° (PR-2B) ³⁾		574520	
M 15 45° (PR-2B) ³⁾		574522	
M 18 45° (PR-2B) ³⁾		574524	
M 22 45° (PR-2B) ³⁾		574526	
M 28 45° (PR-2B) ³⁾		574528	
M 35 45° (PR-2B) ³⁾		574530	
V 12		570107	
V 14		570112	
VG 14		570132	
V 15		570115	
V 16		570117	
VG 16		570137	
V 18		570125	
V 22		570135	
V 28		570145	
V 35		570155	
V 42		570165	
V 54		570175	
V 12 45° (PR-2B) ³⁾		574502	
VG 14 45° (PR-2B) ³⁾		574536	
V 15 45° (PR-2B) ³⁾		574504	
VG 16 45° (PR-2B) ³⁾		574538	
V 18 45° (PR-2B) ³⁾		574506	
V 22 45° (PR-2B) ³⁾		574508	
V 28 45° (PR-2B) ³⁾		574510	
V 35 45° (PR-2B) ³⁾		574512	
SANHA-Press Pressfittings Serie 6000		SA 12	570930
		SA 14	570932
		SA 15	570935
		SA 16	570937
		SA 18	570940
		SA 22	570945
		SA 28	570950
		SA 35	570955
		M 12	570100
		M 15	570110
		M 18	570120
		M 22	570130
		M 28	570140
		M 35	570150
		M 42 (PR-3S) ³⁾	572706
		M 54 (PR-3S) ³⁾	572708
	XP 64,0 XL (PR-3S) ³⁾⁷⁾	579100	
	XP 66,7 XL (PR-3S) ³⁾⁷⁾	579108	
	M 66,7 XL (PR-3S) ³⁾⁷⁾	579107	
	M 76,1 XL (PR-3S) ³⁾⁷⁾	579101	
	M 88,9 XL (PR-3S) ³⁾⁷⁾	579102	
	M 108,0 XL (PR-3S) ³⁾⁷⁾	579103	
	M 12 45° (PR-2B) ³⁾	574520	
	M 15 45° (PR-2B) ³⁾	574522	
	M 18 45° (PR-2B) ³⁾	574524	
	M 22 45° (PR-2B) ³⁾	574526	
	M 28 45° (PR-2B) ³⁾	574528	
	M 35 45° (PR-2B) ³⁾	574530	
	V 12	570107	
	V 14	570112	
	VG 14	570132	
	V 15	570115	
	V 16	570117	
	VG 16	570137	
	V 18	570125	
	V 22	570135	
	V 28	570145	
	V 35	570155	
	V 42	570165	
	V 54	570175	
	V 12 45° (PR-2B) ³⁾	574502	
	VG 14 45° (PR-2B) ³⁾	574536	
	V 15 45° (PR-2B) ³⁾	574504	
	VG 16 45° (PR-2B) ³⁾	574538	
	V 18 45° (PR-2B) ³⁾	574506	
	V 22 45° (PR-2B) ³⁾	574508	
	V 28 45° (PR-2B) ³⁾	574510	
	V 35 45° (PR-2B) ³⁾	574512	

System	Pressing contour	Art.-No.	
SANHA-Press SOLAR Pressfittings Serie 12000/ Serie 13000	SA 12	570930	
	SA 15	570935	
	SA 18	570940	
	SA 22	570945	
	SA 28	570950	
	SA 35	570955	
	M 12	570100	
	M 15	570110	
	M 18	570120	
	M 22	570130	
	M 28	570140	
	M 35	570150	
	M 42 (PR-3S) ³⁾	572706	
	M 54 (PR-3S) ³⁾	572708	
	XP 64,0 XL (PR-3S) ³⁾⁷⁾	579100	
	XP 66,7 XL (PR-3S) ³⁾⁷⁾	579108	
	M 66,7 XL (PR-3S) ³⁾⁷⁾	579107	
	M 76,1 XL (PR-3S) ³⁾⁷⁾	579101	
	M 88,9 XL (PR-3S) ³⁾⁷⁾	579102	
	M 108,0 XL (PR-3S) ³⁾⁷⁾	579103	
	M 12 45° (PR-2B) ³⁾	574520	
	M 15 45° (PR-2B) ³⁾	574522	
	M 18 45° (PR-2B) ³⁾	574524	
	M 22 45° (PR-2B) ³⁾	574526	
	M 28 45° (PR-2B) ³⁾	574528	
	M 35 45° (PR-2B) ³⁾	574530	
	V 12	570107	
	V 15	570115	
	V 18	570125	
	V 22	570135	
	V 28	570145	
	V 35	570155	
	V 42	570165	
	V 54	570175	
	V 12 45° (PR-2B) ³⁾	574502	
	V 15 45° (PR-2B) ³⁾	574504	
	V 18 45° (PR-2B) ³⁾	574506	
	V 22 45° (PR-2B) ³⁾	574508	
	V 28 45° (PR-2B) ³⁾	574510	
	V 35 45° (PR-2B) ³⁾	574512	
	SANHA PURAPRESS Serie 8000	SA 12	570930
		SA 14	570932
		SA 15	570935
		SA 16	570937
		SA 18	570940
		SA 22	570945
SA 28		570950	
SA 35		570955	
M 12		570100	
M 15 ¹⁾		570110	
M 18 ¹⁾		570120	
M 22 ¹⁾		570130	
M 28 ¹⁾		570140	
M 35 ¹⁾		570150	
M 42 (PR-3S) ³⁾		572706	
M 54 (PR-3S) ³⁾		572708	
XP 64,0 XL (PR-3S) ³⁾⁷⁾		579100	
XP 66,7 XL (PR-3S) ³⁾⁷⁾		579108	
M 66,7 XL (PR-3S) ³⁾⁷⁾		579107	
M 76,1 XL (PR-3S) ³⁾⁷⁾		579101	
M 88,9 XL (PR-3S) ³⁾⁷⁾		579102	
M 108,0 XL (PR-3S) ³⁾⁷⁾		579103	
M 12 45° (PR-2B) ³⁾		574520	
M 15 45° (PR-2B) ³⁾		574522	

System	Pressing contour	Art.-No.	
SANHA-Therm Serie 24000	SA 12	570930	
	SA 15	570935	
	SA 18	570940	
	SA 22	570945	
	SA 28	570950	
	SA 35	570955	
	M 12	570100	
	M 15	570110	
	M 18	570120	
	M 22	570130	
	M 28	570140	
	M 35	570150	
	M 42 (PR-3S) ³⁾	572706	
	M 54 (PR-3S) ³⁾	572708	
	XP 66,7 XL (PR-3S) ³⁾⁷⁾	579108	
	M 66,7 XL (PR-3S) ³⁾⁷⁾	579107	
	M 76,1 XL (PR-3S) ³⁾⁷⁾	579101	
	M 88,9 XL (PR-3S) ³⁾⁷⁾	579102	
	M 108,0 XL (PR-3S) ³⁾⁷⁾	579103	
	M 12 45° (PR-2B) ³⁾	574520	
	M 15 45° (PR-2B) ³⁾	574522	
	M 18 45° (PR-2B) ³⁾	574524	
	M 22 45° (PR-2B) ³⁾	574526	
	M 28 45° (PR-2B) ³⁾	574528	
	M 35 45° (PR-2B) ³⁾	574530	
	V 12	570107	
	V 15	570115	
	V 18	570125	
	V 22	570135	
	V 28	570145	
	V 35	570155	
	V 42	570165	
	V 54	570175	
	V 12 45° (PR-2B) ³⁾	574502	
	V 15 45° (PR-2B) ³⁾	574504	
	V 18 45° (PR-2B) ³⁾	574506	
V 22 45° (PR-2B) ³⁾	574508		
V 28 45° (PR-2B) ³⁾	574510		
V 35 45° (PR-2B) ³⁾	574512		
SANHA-Therm Industry Serie 28000	SA 12	570930	
	SA 15	570935	
	SA 18	570940	
	SA 22	570945	
	SA 28	570950	
	SA 35	570955	
	M 12	570100	
	M 15	570110	
	M 18	570120	
	M 22	570130	
	M 28	570140	
	M 35	570150	
	M 42 (PR-3S) ³⁾	572706	
	M 54 (PR-3S) ³⁾	572708	
	XP 66,7 XL (PR-3S) ³⁾⁷⁾	579108	
	M 66,7 XL (PR-3S) ³⁾⁷⁾	579107	
M 76,1 XL (PR-3S) ³⁾⁷⁾	579101		
M 88,9 XL (PR-3S) ³⁾⁷⁾	579102		
M 108,0 XL (PR-3S) ³⁾⁷⁾	579103		
M 12 45° (PR-2B) ³⁾	574520		
M 15 45° (PR-2B) ³⁾	574522		
M 18 45° (PR-2B) ³⁾	574524		
M 22 45° (PR-2B) ³⁾	574526		
M 28 45° (PR-2B) ³⁾	574528		
M 35 45° (PR-2B) ³⁾	574530		
SANPRO THPRESS	TH 16°	570460	
	TH 20°	570470	
	TH 26°	570475	
	TH 32°	570480	
	SATEC SK VIterm	TH 16°	570460
		TH 18°	570465
		TH 20°	570470
		TH 26°	570475
		TH 32°	570480
		U 40	570790
		U 50	570795
		U 63 (S)	572365
Schwer Fittings AQUApress	M 12	570100	
	M 15	570110	
	M 18	570120	
	M 22	570130	
	M 28	570140	
	M 35	570150	
	M 42 (4G)	570160	
	M 54 (4G)	570170	
	M 12 45° (PR-2B) ³⁾	574520	
	M 15 45° (PR-2B) ³⁾	574522	
	M 18 45° (PR-2B) ³⁾	574524	
	M 22 45° (PR-2B) ³⁾	574526	
	M 28 45° (PR-2B) ³⁾	574528	
	M 35 45° (PR-2B) ³⁾	574530	

System	Pressing contour	Art.-No.
TIEMME	TH 14*	570455
AL-COBRAPEX	TH 16*	570460
Serie 1650	TH 18*	570465
	TH 20*	570470
	TH 25*	570495
	TH 26*	570475
	THL 32	570487
	TH 40	570485
	TH 50 (S)	572400
	TH 63 (S)	572405
TIEMME	RFz 12*	571320
Serie 1700 PE-X	RFz 16*	571325
a pressare	RFz 20*	571330
	RFz 25	571335
	RFz 32	571340
TIEMME	TH 16*	570460
TIEMME Gas	TH 20*	570470
	TH 26*	570475
	THL 32	570487
TIGRE	TH 16*	570460
ALPEX GAS	TH 20*	570470
	TH 26*	570475
	TH 32	570480
TKM	TH 14*	570455
Systemtechnik	TH 16*	570460
	TH 20*	570470
	TH 26*	570475
	TH 32	570480
	TH 40	570485
	TH 50 (S)	572400
	TH 63 (S)	572405
TRA	U 16*	570765
MULTITRAPRESS	U 18*	570770
	U 20*	570775
	U 25*	570780
	U 32	570785
	U 40	570790
	U 50	570795
	U 63 (PR-3B) ³⁾	572837
	U 63 (S)	572365
TRA TRAPRESS	H 12*	570300
	H 16*	570320
	H 20*	570350
	H 25*	570360
	H 32	570380
	RFz 12*	571320
	RFz 16*	571325
	RFz 20*	571330
	RFz 25	571335
	RFz 32	571340
TWEETOP	U 16*	570765
	U 20*	570775
	U 25*	570780
	U 32	570785
	U 40	570790
	U 50	570795
	U 63 (PR-3B) ³⁾	572837
	U 63 (S)	572365
	U 75 (PR-3B) ³⁾	572828
UNICAL AG	U 16*	570765
MAX-MULTIPEX	U 20*	570775
	H 26*	570370
	U 32	570785
UNIDELTA	TH 16*	570460
DeltAll	TH 20*	570470
	TH 26*	570475
	TH 32	570480
	TH 40	570485
	TH 50 (S)	572400
	TH 63 (S)	572405
	H 16*	570320
	H 20*	570350
	H 26*	570370
	H 32	570380
	H 40 (4G)	570390
	U 16*	570765
	U 20*	570775
	U 32	570785
	U 40	570790
	U 50	570795
	U 63 (S)	572365
UNIDELTA	TH 16*	570460
DeltAll GAS	TH 20*	570470
	TH 26*	570475
	TH 32	570480
	H 16*	570320
	H 20*	570350
	H 26*	570370
	H 32	570380
	U 16*	570765
	U 20*	570775
	U 32	570785
Uponor MLC	UP 14*	572630
	UP 16*	572632
	UP 18*	572634
	UP 20*	572636
	UP 25	572638
	UP 32	572640
	U 40	570790
	U 50	570795
	U 63 (PR-3B) ³⁾	572837
	U 63 (S)	572365
	U 75 (PR-3B) ³⁾	572828

System	Pressing contour	Art.-No.
Uponor MLC-D	UP 16*	572632
	UP 20*	572636
	UP 25	572638
	UP 32	572640
	U 50	570795
	U 63 (PR-3B) ³⁾	572837
	U 63 (S)	572365
	U 75 (PR-3B) ³⁾	572828
Uponor MLC-G ²⁾	UP 20 ²⁾	572636
	UP 25	572638
	UP 32	572640
Uponor	UP 16*	572632
Uni Pipe PLUS	UP 20*	572636
	UP 25	572638
	UP 32	572640
Valsir PEXAL	H 14*	570310
	H 16*	570320
	H 20*	570350
	H 26*	570370
	H 32 V	570685
	H 40 V (PR-3B) ³⁾	572833
	H 50 V (PR-3B) ³⁾	572834
	H 63 V (PR-3B) ³⁾	572835
Valsir PEXAL Gas	H 14*	570310
	H 16*	570320
	H 20*	570350
	H 26*	570370
Van Marcke Log.	TH 16*	570460
Tubipex	TH 17*	570462
	TH 20*	570470
	TH 26*	570475
	TH 32	570480
	TH 40	570485
	TH 50 (S)	572400
	TH 63 (S)	572405
	TH 75 (PR-3B) ³⁾	572829
Van Marcke Log.	M 12	570100
Tubipress	M 15	570110
	M 18	570120
	M 22	570130
	M 28	570140
	M 35	570150
	M 42 (4G)	570160
	M 54 (4G)	570170
	M 42 (PR-3S) ³⁾	572706
	M 54 (PR-3S) ³⁾	572708
	M 76,1 XL (PR-3S) ^{3) 1)}	579101
	M 88,9 XL (PR-3S) ^{3) 1)}	579102
	M 12 45° (PR-2B) ³⁾	574520
	M 15 45° (PR-2B) ³⁾	574522
	M 18 45° (PR-2B) ³⁾	574524
	M 22 45° (PR-2B) ³⁾	574526
	M 28 45° (PR-2B) ³⁾	574528
	M 35 45° (PR-2B) ³⁾	574530
Variotherm	TH 11,6*	570482
System TH	TH 16*	570460
	TH 20*	570470
Viega	VX 12*	571630
Fonterra	VP 14/15*	570905
	VP 16/17*	570910
	VP 20*	570915
	VP 25	570920
Viega Pexfit	VX 16*	571635
	VX 20*	571640
	VX 25*	571645
Viega Pexfit G	VX 16*	571635
	VX 20*	571640
	VX 25*	571645
Viega Prestabo	V 12	570107
	V 15	570115
	V 18	570125
	V 22	570135
	V 28	570145
	V 35	570155
	V 42	570165
	V 54	570175
	VF 64,0 (PR-3B) ^{3) 6)}	572815
	VF 76,1 (PR-3B) ^{3) 6)}	572816
	VF 88,9 (PR-3B) ^{3) 6)}	572817
	VF 108,0 (PR-3B) ^{3) 6)}	572818
	V 12 45° (PR-2B) ³⁾	574502
	V 15 45° (PR-2B) ³⁾	574504
	V 18 45° (PR-2B) ³⁾	574506
	V 22 45° (PR-2B) ³⁾	574508
	V 28 45° (PR-2B) ³⁾	574510
	V 35 45° (PR-2B) ³⁾	574512
Viega Profipress	V 12	570107
	VG 14	570132
	V 15	570115
	VG 16	570137
	V 18	570125
	V 22	570135
	V 28	570145
	V 35	570155
	V 42	570165
	V 54	570175
	VF 64,0 (PR-3B) ^{3) 6)}	572815
	VF 76,1 (PR-3B) ^{3) 6)}	572816
	VF 88,9 (PR-3B) ^{3) 6)}	572817
	VF 108,0 (PR-3B) ^{3) 6)}	572818
	V 12 45° (PR-2B) ³⁾	574502
	VG 14 45° (PR-2B) ³⁾	574536
	V 15 45° (PR-2B) ³⁾	574504
	VG 16 45° (PR-2B) ³⁾	574538
	V 18 45° (PR-2B) ³⁾	574506
	V 22 45° (PR-2B) ³⁾	574508
	V 28 45° (PR-2B) ³⁾	574510
	V 35 45° (PR-2B) ³⁾	574512

System	Pressing contour	Art.-No.
Viega	V 12	570107
Profipress G	V 15	570115
	V 18	570125
	V 22	570135
	V 28	570145
	V 35	570155
	V 42	570165
	V 54	570175
	VF 64,0 (PR-3B) ^{3) 6)}	572815
	V 12 45° (PR-2B) ³⁾	574502
	V 15 45° (PR-2B) ³⁾	574504
	V 18 45° (PR-2B) ³⁾	574506
	V 22 45° (PR-2B) ³⁾	574508
	V 28 45° (PR-2B) ³⁾	574510
	V 35 45° (PR-2B) ³⁾	574512
Viega	V 12	570107
Profipress S	V 15	570115
	V 18	570125
	V 22	570135
	V 28	570145
	V 35	570155
	V 12 45° (PR-2B) ³⁾	574502
	V 15 45° (PR-2B) ³⁾	574504
	V 18 45° (PR-2B) ³⁾	574506
	V 22 45° (PR-2B) ³⁾	574508
	V 28 45° (PR-2B) ³⁾	574510
	V 35 45° (PR-2B) ³⁾	574512
Viega	V 12	570107
Profipress Therm	V 15	570115
	V 18	570125
	V 22	570135
	V 12 45° (PR-2B) ³⁾	574502
	V 15 45° (PR-2B) ³⁾	574504
	V 18 45° (PR-2B) ³⁾	574506
	V 22 45° (PR-2B) ³⁾	574508
Viega ProPress	VUS 1/2" (OD 15,9mm)	571770
System USA	VUS 3/4" (OD 22,2mm)	571775
	VUS 1" (OD 28,6mm)	571780
	VUS 1 1/4" (OD 34,9mm)	571785
	VUS 1 1/2" (OD 41,3mm)	571790
	VUS 2" (OD 54,0mm)	571795
XL-C/XL-S	VUSF 2 1/2" (PR-3B) ^{3) 6)}	572819
	(OD 66,7mm)	
XL-C/XL-S	VUSF 3" (PR-3B) ^{3) 6)}	572820
	(OD 79,4mm)	
XL-C/XL-S	VUSF 4" (PR-3B) ^{3) 6)}	572821
	(OD 104,8mm)	
Viega ProPress	VAU 15 (OD 12,7mm)	572687
WATER System	VAU 20 (OD 19,1mm)	572689
AUS	VAU 25 (OD 25,4mm)	572691
	VAU 32 (OD 31,8mm)	572693
	VAU 40 (OD 38,1mm)	572695
	VAU 50 (OD 50,8mm)	572697
Viega ProPressG	VAU 15 (OD 12,7mm)	572687
GAS System	VAU 20 (OD 19,1mm)	572689
AUS	VAU 25 (OD 25,4mm)	572691
	VAU 32 (OD 31,8mm)	572693
	VAU 40 (OD 38,1mm)	572695
	VAU 50 (OD 50,8mm)	572697
Viega Raxinox	VRX 16	571750
	VRX 20	571752
Viega Raxofix	VRX 16	571750
	VRX 20	571752
	VRX 25	571754
	VRX 32	571756
	VRX 40	571758
	VRX 50	571760
Viega Sanfix ²⁾	VP 16/17*	570910
	VP 20*	570915
	VP 25*	570920
	VP 32	570925
Viega Sanpress	V 12	570107
	V 15	570115
	V 18	570125
	V 22	570135
	V 28	570145
	V 35	570155
	V 42	570165
	V 54	570175
	VR 76,1 (PR-3B) ^{3) 6)}	572822
	VR 88,9 (PR-3B) ^{3) 6)}	572823
	VR 108,0 (PR-3B) ^{3) 6)}	572824
	V 12 45° (PR-2B) ³⁾	574502
	V 15 45° (PR-2B) ³⁾	574504
	V 18 45° (PR-2B) ³⁾	574506
	V 22 45° (PR-2B) ³⁾	574508
	V 28 45° (PR-2B) ³⁾	574510
	V 35 45° (PR-2B) ³⁾	574512
Viega	V 15	570115
Sanpress Inox	V 18	570125
	V 22	570135
	V 28	570145
	V 35	570155
	V 42	570165
	V 54	570175
	VF 64,0 (PR-3B) ^{3) 6)}	572815
	VF 76,1 (PR-3B) ^{3) 6)}	572816
	VF 88,9 (PR-3B) ^{3) 6)}	572817
	VF 108,0 (PR-3B) ^{3) 6)}	572818
	V 15 45° (PR-2B) ³⁾	574504
	V 18 45° (PR-2B) ³⁾	574506
	V 22 45° (PR-2B) ³⁾	574508
	V 28 45° (PR-2B) ³⁾	574510
	V 35 45° (PR-2B) ³⁾	574512

REMS pressing tongs REMS pressing rings

Accessories for REMS radial presses (except for REMS Mini-Press ACC, REMS Mini-Press 22 V ACC) and suitable radial presses of other makes

System	Pressing contour	Art.-No.	
Viega Sanpress Inox G	V 15	570115	
	V 18	570125	
	V 22	570135	
	V 28	570145	
	V 35	570155	
	V 42	570165	
	V 54	570175	
	VF 64,0 (PR-3B) ³⁾⁶⁾	572815	
	VF 76,1 (PR-3B) ³⁾⁶⁾	572816	
	VF 88,9 (PR-3B) ³⁾⁶⁾	572817	
	VF 108,0 (PR-3B) ³⁾⁶⁾	572818	
	V 15 45° (PR-2B) ³⁾	574504	
	V 18 45° (PR-2B) ³⁾	574506	
	V 22 45° (PR-2B) ³⁾	574508	
	V 28 45° (PR-2B) ³⁾	574510	
	V 35 45° (PR-2B) ³⁾	574512	
	Viessmann	TH 14*	570455
		TH 16*	570460
TH 20*		570470	
TH 26*		570475	
TH 32		570480	
VINSAR PEX-AL-PEX	TH 16*	570460	
	TH 20*	570470	
	TH 26*	570475	
	TH 32	570480	
VSH MultiPress	U 14*	570760	
	U 16*	570765	
	U 20*	570775	
	U 25*	570780	
	U 32	570785	
VSH SudoPress Carbon V	U 40	570790	
	V 12	570107	
	V 15	570115	
	V 18	570125	
	V 22	570135	
VSH SudoPress Copper V	V 28	570145	
	V 35	570155	
	V 42	570165	
	V 54	570175	
	V 12	570107	
VSH SudoPress Copper Gas	V 14	570112	
	V 15	570115	
	V 16	570117	
	V 18	570125	
	V 22	570135	
	V 28	570145	
	V 35	570155	
	V 42	570165	
	V 54	570175	
	V 14	570112	
	V 15	570115	
	V 16	570117	
	VSH SudoPress Copper Solar	V 18	570125
V 22		570135	
V 28		570145	
V 35		570155	
V 42		570165	
V 54		570175	
VSH SudoPress Stainless	V 14	570112	
	V 15	570115	
	V 18	570125	
	V 22	570135	
	V 28	570145	
	V 35	570155	
VSH SkinPress	V 42	570165	
	V 54	570175	
	TH 14*	570455	
	TH 16*	570460	
	TH 18*	570465	
	TH 20*	570470	
VSH SkinPress Gas	TH 26*	570475	
	THL 32	570487	
	TH 40	570485	
	TH 50 (S)	572400	
	TH 63 (S)	572405	
	TH 16*	570460	

System	Pressing contour	Art.-No.	
VSH XPress Carbon	M 12	570100	
	M 15	570110	
	M 18 ¹⁾	570120	
	M 22	570130	
	M 28 ¹⁾	570140	
	M 35	570150	
	M 42 (4G)	570160	
	M 54 (4G)	570170	
	M 42 (PR-3S) ³⁾	572706	
	M 54 (PR-3S) ³⁾	572708	
	M 12 45° (PR-2B) ³⁾	574520	
	M 15 45° (PR-2B) ³⁾	574522	
	M 18 45° (PR-2B) ³⁾	574524	
	M 22 45° (PR-2B) ³⁾	574526	
	M 28 45° (PR-2B) ³⁾	574528	
	M 35 45° (PR-2B) ³⁾	574530	
	VSH XPress Copper	M 12	570100
		M 15	570110
		M 18 ¹⁾	570120
		M 22	570130
		M 28 ¹⁾	570140
	VSH XPress Copper GAS	M 35	570150
		M 42 (PR-3S) ³⁾	572706
M 54 (PR-3S) ³⁾		572708	
M 12 45° (PR-2B) ³⁾		574520	
M 15 45° (PR-2B) ³⁾		574522	
M 18 45° (PR-2B) ³⁾		574524	
M 22 45° (PR-2B) ³⁾		574526	
M 28 45° (PR-2B) ³⁾		574528	
M 35 45° (PR-2B) ³⁾		574530	
VSH XPress Copper Solar		M 15	570110
		M 18 ¹⁾	570120
		M 22	570130
		M 28 ¹⁾	570140
	M 35	570150	
	M 42 (PR-3S) ³⁾	572706	
	M 54 (PR-3S) ³⁾	572708	
	M 15 45° (PR-2B) ³⁾	574522	
	M 18 45° (PR-2B) ³⁾	574524	
	M 22 45° (PR-2B) ³⁾	574526	
	M 28 45° (PR-2B) ³⁾	574528	
	M 35 45° (PR-2B) ³⁾	574530	
	VSH XPress Stainless	M 15	570110
M 18 ¹⁾		570120	
M 22		570130	
M 28 ¹⁾		570140	
M 35		570150	
M 42 (4G)		570160	
M 54 (4G)		570170	
M 42 (PR-3S) ³⁾		572706	
M 54 (PR-3S) ³⁾		572708	
M 15 45° (PR-2B) ³⁾		574522	
M 18 45° (PR-2B) ³⁾		574524	
M 22 45° (PR-2B) ³⁾		574526	
M 28 45° (PR-2B) ³⁾		574528	
VSH XPress Stainless Gas	M 35 45° (PR-2B) ³⁾	574530	
	M 15	570110	
	M 18 ¹⁾	570120	
	M 22	570130	
	M 28 ¹⁾	570140	
	M 35	570150	
	M 42 (PR-3S) ³⁾	572706	
	M 54 (PR-3S) ³⁾	572708	
	M 15 45° (PR-2B) ³⁾	574522	
	M 18 45° (PR-2B) ³⁾	574524	
	M 22 45° (PR-2B) ³⁾	574526	
	M 28 45° (PR-2B) ³⁾	574528	
	M 35 45° (PR-2B) ³⁾	574530	

System	Pressing contour	Art.-No.	
Walter Meier Metalplast	U 16*	570765	
	U 18*	570770	
	U 20*	570775	
	U 25*	570780	
	U 32	570785	
	U 40	570790	
	U 50	570795	
	U 63 (PR-3B) ³⁾	572837	
	U 63 (S)	572365	
	U 75 (PR-3B) ³⁾	572828	
	Watts MTR Art press	TH 16*	570460
		TH 20*	570470
		TH 26*	570475
TH 32		570480	
WATTS RADIANT Watts WaterPEX	US ¾"	571450	
	US ½"	571455	
	US ¾"	571460	
WATTS RADIANT Watts RadiantPEX	US 1"	571465	
	US 1 ¼"	571470	
	US 1 ½"	571475	
	US ¾"	571450	
	US ½"	571455	
	US ¾"	571460	
	US 1"	571465	
WATTS RADIANT Watts RadiantPEX-AL Wavin Tigris K1	US 1 ¼"	571470	
	US 1 ½"	571475	
	U 16 (½")	570765	
	U 20 (¾")	570775	
	U 25 (¾")	570780	
	U 32 (1")	570785	
	U 14*	570760	
Wavin Tigris M1	U 16*	570765	
	U 20*	570775	
	U 25*	570780	
	U 32	570785	
	U 40	570790	
	U 50	570795	
	WeeConPress Alu	M 12	570100
		M 15	570110
		M 18	570120
		M 22	570130
		M 28	570140
		M 35	570150
		M 42 (4G)	570160
M 54 (4G)		570170	
M 42 (PR-3S) ³⁾		572706	
M 54 (PR-3S) ³⁾		572708	
M 12 45° (PR-2B) ³⁾		574520	
M 15 45° (PR-2B) ³⁾		574522	
M 18 45° (PR-2B) ³⁾		574524	
M 22 45° (PR-2B) ³⁾	574526		
M 28 45° (PR-2B) ³⁾	574528		
M 35 45° (PR-2B) ³⁾	574530		
V 12	V 12	570107	
	V 15	570115	
	V 18	570125	
	V 22	570135	
	V 28	570145	
	V 35	570155	
	V 42	570165	
	V 54	570175	
	V 12 45° (PR-2B) ³⁾	574520	
	V 15 45° (PR-2B) ³⁾	574504	
	V 18 45° (PR-2B) ³⁾	574506	
	V 22 45° (PR-2B) ³⁾	574508	
	V 28 45° (PR-2B) ³⁾	574510	
V 35 45° (PR-2B) ³⁾	574512		
SA 12	570930		
SA 15	570935		
SA 18	570940		
SA 22	570945		
SA 28	570950		
SA 35	570955		

Pressfitting systems for gas installations must only be pressed with pressing tongs/pressing rings which are highlighted in yellow. Observe the national regulations.

* These pressing tongs also fit the manual radial press REMS Eco-Press. Observe the national regulations.

- 1) Only pressing tongs from designation "108" (1st quarter of 2008), "208" (2nd quarter of 2008) etc. can be used. The designation is stamped on every pressing jaw.
- 2) For this pressfitting system producing a pressing joint with manual radial presses is not permitted.
- 3) Adapter tongs are required for driving pressing rings (PR), see page 170.
- 4) Press fittings made of red bronze (ProPress XL) must be pressed with pressing rings with press contour VUSR, copper fittings (ProPress XL-C) and stainless steel fittings (ProPress XL-S) with pressing rings with press contour VUSF.
- 5) For taking suitable pressing inserts.
- 6) Press fittings made of red bronze (Sanpress XL) must be pressed with pressing rings with press contour VR, copper fittings (Profipress XL, Profipress G XL), carbon steel (Prestabo XL) and stainless steel fittings (Sanpress Inox XL, Sanpress Inox G XL) with pressing rings with press contour VF.
- 7) Driven by REMS Power-Press XL.

The suitability of REMS pressing tools for pressfitting systems: Date 14.10.2016. For the updated situation regarding suitability status check our website: www.rems.de → Downloads → Product catalogues, brochures → REMS Catalogue.

Pressing tongs/pressing rings for additional pressfitting systems on request.

REMS pressing tongs REMS pressing rings

Accessories for REMS radial presses (except for REMS Mini-Press ACC, REMS Mini-Press 22 V ACC) and suitable radial presses of other makes

System	Pressing contour	Art.-No.
WeeConPress	M 12	570100
C-Stahl	M 15	570110
	M 18	570120
	M 22	570130
	M 28	570140
	M 35	570150
	M 42 (4G)	570160
	M 54 (4G)	570170
	M 42 (PR-3S) ³⁾	572706
	M 54 (PR-3S) ³⁾	572708
	M 12 45° (PR-2B) ³⁾	574520
	M 15 45° (PR-2B) ³⁾	574522
	M 18 45° (PR-2B) ³⁾	574524
	M 22 45° (PR-2B) ³⁾	574526
	M 28 45° (PR-2B) ³⁾	574528
	M 35 45° (PR-2B) ³⁾	574530
WeeConPress	M 12	570100
Inox	M 15	570110
	M 18	570120
	M 22	570130
	M 28	570140
	M 35	570150
	M 42 (4G)	570160
	M 54 (4G)	570170
	M 42 (PR-3S) ³⁾	572706
	M 54 (PR-3S) ³⁾	572708
	M 12 45° (PR-2B) ³⁾	574520
	M 15 45° (PR-2B) ³⁾	574522
	M 18 45° (PR-2B) ³⁾	574524
	M 22 45° (PR-2B) ³⁾	574526
	M 28 45° (PR-2B) ³⁾	574528
	M 35 45° (PR-2B) ³⁾	574530
WeeConPress	M 12	570100
Kupfer	M 15	570110
	M 18	570120
	M 22	570130
	M 28	570140
	M 35	570150
	M 42 (4G)	570160
	M 54 (4G)	570170
	M 42 (PR-3S) ³⁾	572706
	M 54 (PR-3S) ³⁾	572708
	M 12 45° (PR-2B) ³⁾	574520
	M 15 45° (PR-2B) ³⁾	574522
	M 18 45° (PR-2B) ³⁾	574524
	M 22 45° (PR-2B) ³⁾	574526
	M 28 45° (PR-2B) ³⁾	574528
	M 35 45° (PR-2B) ³⁾	574530

System	Pressing contour	Art.-No.
WeeConFlex	H 16*	570320
MVR	H 20*	570350
	H 26*	570370
	H 32	570380
	U 40	570790
	U 50	570795
	U 63 (PR-3B) ³⁾	572837
	U 63 (S)	572365
	TH 16*	570460
	TH 20*	570470
	TH 26*	570475
	TH 32	570480
	TH 40	570485
	TH 50 (S)	572400
	TH 63 (S)	572405
WEM	U 16*	570765
WIELAND	TH 14 ²⁾	570455
cuprotherm	TH 16 ²⁾	570460
CTX ²⁾	TH 18 ²⁾	570465
	TH 20 ²⁾	570470
	TH 26 ²⁾	570475
WKS-Press	TH 14*	570455
	TH 16*	570460
	TH 17*	570462
	TH 20*	570470
	TH 26*	570475
	TH 32	570480
	TH 40	570485
WÜRTH	TH 16*	570460
Würth	TH 20*	570470
	TH 26*	570475
	HE 32	571900
	HE 40	571902
XtraConnect	F 16*	570717
	F 20*	570727
	F 26*	570730
	F 32	570735
	H 16*	570320
	H 20*	570350
	H 26*	570370
	H 32	570380
	TH 16*	570460
	TH 20*	570470
	TH 26*	570475
	TH 32	570480
	U 16*	570765
	U 20*	570775
(DN 26)	U 25*	570780
	U 32	570785
	VP 16*	570910
	VP 20*	570915
	VP 32	570925

System	Pressing contour	Art.-No.
Zetaesse	TH 14*	570455
Multitrato	TH 16*	570460
EUROPEX	TH 18*	570465
	TH 20*	570470
	TH 26*	570475
	TH 32	570480
	U 14*	570760
	U 16*	570765
	U 18*	570770
	U 20*	570775
Zetaesse	TH 14*	570455
Multitrato	TH 16*	570460
ISOPEX	TH 18*	570465
	TH 20*	570470
	TH 26*	570475
	TH 32	570480
	U 14*	570760
	U 16*	570765
	U 18*	570770
	U 20*	570775
Zetaesse Rame	TH 14*	570455
HydroSAN	TH 16*	570460
	TH 20*	570470
	U 14*	570760
	U 16*	570765
	U 20*	570775
Zetaesse Rame	TH 14*	570455
ThermoSAN	TH 16*	570460
	TH 20*	570470
	U 14*	570760
	U 16*	570765
	U 20*	570775
ZEWOTHERM	TH 12*	570452
	TH 16*	570460
	TH 17*	570462
	TH 18*	570465
	TH 20*	570470
	TH 26*	570475
	TH 32	570480
	TH 40	570485
	TH 50 (S)	572400
	TH 63 (S)	572405
ZURN	US ¾"	571450
INDUSTRIES	US ½"	571455
ZURN PEX	US ¾"	571460
	US 1"	571465
	US 1¼"	571470
	US 1½"	571475
	US 2"	571477

Accessories

Description	Art.-No.
Adapter tongs Z1 for driving REMS pressing rings 45° (PR-2B)	574500
Adapter tongs Z2 for driving REMS pressing rings M 42–54 (PR-3S)	572795
Adapter tongs Z4 for driving REMS pressing rings F 75 (PR-3B), TH 63–75 (PR-3B), U 63–75 (PR-3B)	572801
Adapter tongs Z5 for driving REMS pressing rings VF/VR 64–108 (PR-3B), VUSF/VUSR 2½–4" (PR-3B), VAUF 65–100 (PR-3B)	572802
Adapter tongs Z6 XL for driving REMS pressing rings XL 64,0–108,0 (PR-3S) with REMS Power-Press XL	579120
Steel case with insert for 6 pressing tongs (up to Ø 35 mm/1" and pressing tongs U 40, U 50, TH 40, F 40, F 50, G 40, VUS 1¼"/cropping tongs and compartment for pipe cutter up to 42 mm	570295
Steel case with insert for 2 pressing tongs (M 42 (4G), M 54 (4G), V 42, V 54, H 40, H 40 A, VUS 1½", VUS 2")	570290
Steel case with insert for adapter tongs with pressing rings M 42 (PR-3S) and M 54 (PR-3S) or with pressing rings SA 42 (PR-3S) and M 54 (PR-3S).	572810
Steel case with inlay for adapter tongs and 4 pressing rings VF 64,0–108,0/VR 76,1–108,0/ VUSF 2½–4"/VUSR 2½–4" (PR-3B)	572809
Steel case with insert for adapter tongs Mini Z1 and adapter tongs Z1 and 6 REMS pressing rings V 12–35 45° (PR-2B) or M 12–35 45° (PR-2B)	574516

